



Serving Youth & Families

M·H·Y

FAMILY SERVICES

Since 1878

ANNUAL REPORT 2018-2019

Table of Contents

Programs and Offerings	3
Your Support of Our Work Made a Difference	4
Your Gifts Made a Difference	9
Your Time Made a Difference	14
Supporting Our Future	19
Donor Report	21

MHY LEADERSHIP TEAM

Lisa M. Schiller

Executive Director

Lukas Carothers

Director, Community Services

Dawn Crissman

Director, Residential Services

Liz Hays

Director, Human Resources

Christine Raymond

Director, Education

Amy Smith

Director, Development

BOARD OF DIRECTORS

Joanna Papada, President

Cindy Thomas, Vice-President

Glenda Larson, Treasurer

Leslie Lancaster

Sandra H. Miller

James Rankin

Kathi Robinson-Dassel

Jim Segedy

Pamela M. Schiller

William Sommers

Amy Tacik

Megan Van Fossan

Peter Watt-Morse

Richard Wood

BOARD OF TRUSTEES

Pamela M. Schiller, President

Sandra H. Miller, Vice-President

Richard Reynolds, Treasurer

Susan Abramowich

Kimberly Brannock

Valerie Cannon

Jill DeStefano Smelko

Selina P. Johnson

Tim Miller

Ronne Wright

Celebrating you!

Whether you are a donor,
volunteer or employee; partner,
youth or family member,

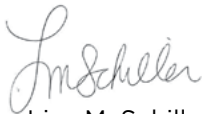
you are making a difference. You are promoting youth healing and resiliency; you are investing in the development of life and coping skills development; and you are investing in our communities' collective future.

Whether you “see” yourself in the highlights of our youth’s successes, the investment of friends and partners, or the many activities and joys of our volunteers, please know that each contribution builds upon the gifts of others just like yours, and together we are helping to sustain a healing center.

If you are looking for opportunities to continue to support our growth, you will find updates on our projects to renovate the Boswell Gymnasium, develop a family center and launch an additional evidence-based, community treatment program. You can make a difference!

Mental wellness is our goal and should be the goal of all. MHY creates opportunities for youth and families to heal and create strong coping strategies for managing anxiety, depression, anger and frustration. As you read about our youth’s experiences and successes, I hope you will be inspired to continue to invest in helping MHY to improve the mental health of the youth who are our future.

In gratitude and service,



Lisa M. Schiller, Executive Director



Programs and Offerings

217

Children **served**
through residential
programs last year



1086

Served through
MHY's Community
Services Program

1341

Youth and families
served across all
programs in FY 18-19

RESIDENTIAL PROGRAMS

- Diversion and Acute Stabilization (DAS)
- Residential Treatment Facility (RTF) for boys
- RYSE Residential Treatment Facility (RTF) for girls

LONGMORE ACADEMY

Licensed as a private academic school by the Pennsylvania Department of Education, Longmore Academy provides education for youth in MHY's residential programs as well as students from area school districts. In addition to a supportive trauma-informed learning environment and core curriculum framework, Longmore Academy offers electives, including STEM, music therapy and pet-assisted literacy. Through individualized instructional practices, students can receive remediation support, credit recovery as well as college and career readiness planning.

COMMUNITY SERVICES PROGRAMS

- Multisystemic Therapy (MST)
- High Fidelity Wraparound (HFW)
- Intensive Aftercare and Community Monitoring
- Electronic Monitoring
- Drug Testing

To learn more about these programs, visit **www.mhyfamilyservices.org**.

Your Support of Our Work Made a Difference



MHY's programs allow for a step down approach to care as youth and families progress therapeutically.

This past year, **8 children successfully discharged from MHY's residential program chose to continue their care** through MHY's Community Services.

MHY has provided the highest level of service to our youth and families. Because of your support, our team of committed and passionate employees can make differences—big and small—in the lives of those in our care.

New Therapeutic Recreation Program

MHY's new Therapeutic Recreation Program introduced new opportunities for the youth in residential care. This year, **youth were offered 160 different therapeutic and educational groups** providing guidance and support to manage bullying, fitness, nutrition, financial literacy, and developing new and individualized coping strategies.

Therapeutic Recreation during the summer months provided children with even more activity. Through the generous support of several donors, children participated in arts and music programs, painting instruction and physical fitness. MHY also welcomed community volunteers and programs introducing fun and educational activities to MHY's boys and girls.

rk
rence



You Made a Difference



Longmore Academy's Extended School Year (ESY) program focuses on maintaining and/or building skill level, kinesthetic learning, and providing a safe, nurturing environment to assist with school related anxiety and phobia. Through summer school, students can recover academic credit to keep them on track for graduation.

This year, Longmore Academy was able to expand its reach to students in MHY's residential programs as well as more students from the community who qualify for ESY. Longmore served four-times the number of community students this summer compared to last year.

259

number of
students served
by Longmore
Academy



Longmore
served a total
of **122 school
districts**.



Longmore educated
44 students who commuted
to Longmore for
just their school day.



Several students who finished treatment in one of MHY's residential programs this year **chose to remain at Longmore.**

Students reported satisfaction with smaller class size, individualized learning lessons, feeling more support with school-related anxiety, and most importantly, feeling safe.



Resident Advisor Delcie Trout celebrated 10 years at MHY. With a warm and inviting smile, Delcie states, "I have always known that I wanted to work with children. It has taken me more years than I care to admit, but **I have found my place in the world and it's here at MHY, working with these children.**"

Delcie is finishing her degree in Elementary and Special Education through the support of MHY's tuition reimbursement program.

Denny

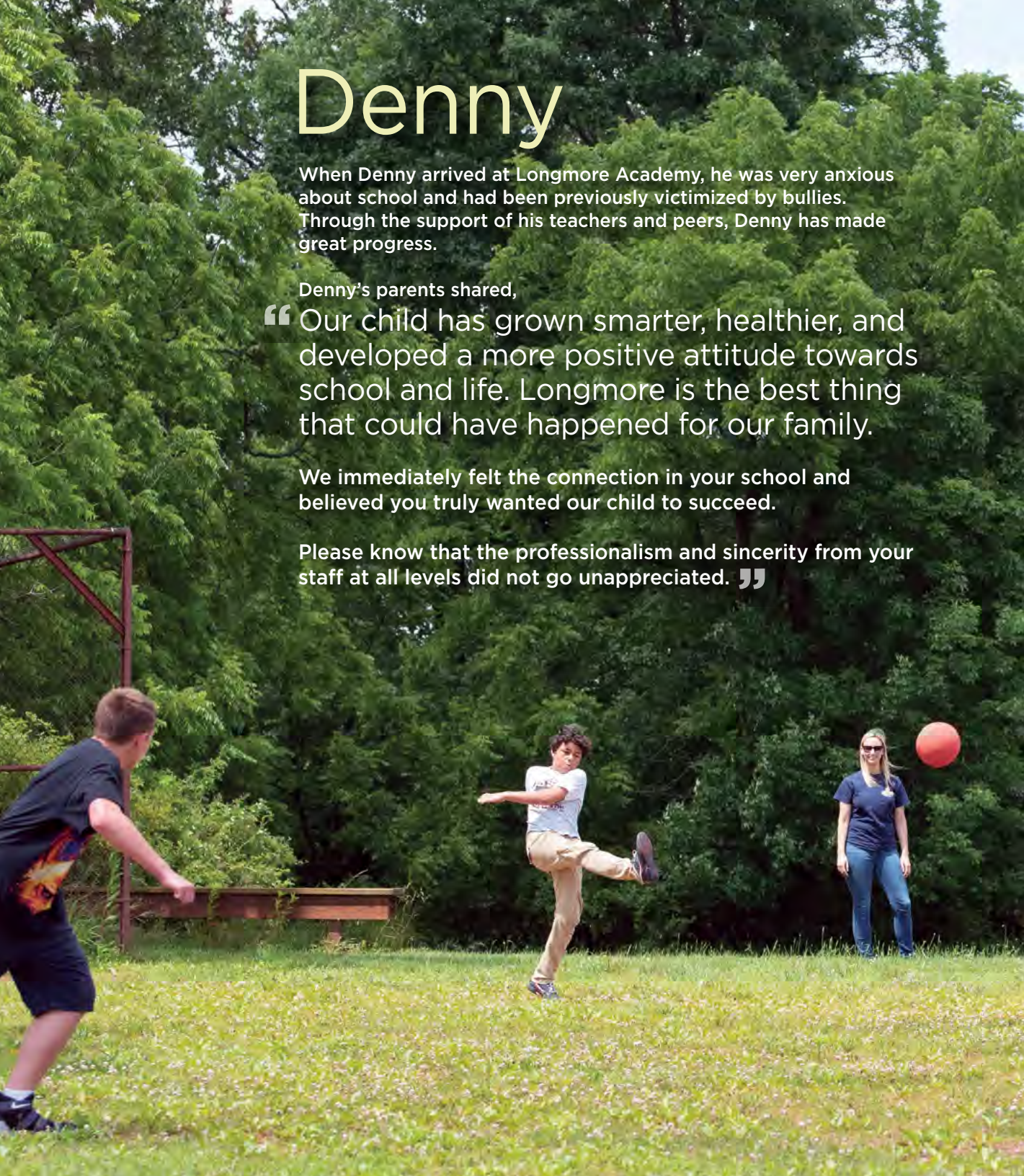
When Denny arrived at Longmore Academy, he was very anxious about school and had been previously victimized by bullies. Through the support of his teachers and peers, Denny has made great progress.

Denny's parents shared,

“Our child has grown smarter, healthier, and developed a more positive attitude towards school and life. Longmore is the best thing that could have happened for our family.

We immediately felt the connection in your school and believed you truly wanted our child to succeed.

Please know that the professionalism and sincerity from your staff at all levels did not go unappreciated.”





MHY's Chaplaincy Program has been central to the organization's mission for decades. Today, spiritual leaders from Dutilh United Methodist Church, Mars United Presbyterian Church, Old Union Presbyterian Church and Valencia Presbyterian Church offer a weekly service on the Mars campus to all interested youth in MHY's residential programs. In addition to weekly services, the Chaplaincy Pastors provide a special Christmas service, Easter sunrise service, and back-to-school kick off service and celebration. Chaplaincy support for some youth is critical to their healing and wellness. MHY and the Chaplaincy Team are committed to supporting youth of all faiths and ensuring their individual spiritual needs are met.

"As local pastors, we see the value of MHY's Chaplaincy Program. Through MHY's Chaplaincy Program, youth have an opportunity for a positive connection to the community, and an opportunity to explore their questions and concerns about life and faith."

- Dutilh Pastor Tom Parkinson and
Associate Pastor Jim Gascoine

Michael

Michael has been working with therapist Joy Pfaff over the last two years on coping strategies to manage his ADHD and angry or frustrating emotions. Using positive imagery — or "thinking of my paradise," as Michael likes to call it — he is able to relax when he feels himself getting frustrated.

Michael, who dreams of becoming a chef one day, can now maintain friendships and focus on his passion of cooking.

Michael says,

"I have learned about myself. Ms. Joy has shown me coping skills that I never thought of before."

MHY can change your life. You just have to accept the help."

Your **Gifts** Made a Difference





New programs at Longmore

Thanks to several community partnerships, Longmore Academy introduced and expanded programming for students this year. New programs for all abilities and interests include STEM/Robotics, Tower Gardens, Music Therapy, Art Residency, Kickball and Cheer.

“Through our community partnership, Longmore has been able to enhance its program for our students to not only impact their academic performance but also support their emotional needs,” says Christine Raymond, Director of Education at MHY. “The STEM and Tower Garden programs incorporated math and science, and we believe these initiatives impacted scores this year in those areas. Our partnership with Animal Friends assisted our literacy program and helped struggling readers gain confidence and proficiency in reading.”

Jeremy

As Jeremy's 13th birthday approached, his mom worried about being able to afford gifts and decorations to celebrate her son's milestone birthday. Jeremy's MST caseworker Nichole Monday thought, “There must be a way I can help this family that has been working so hard on their treatment.”



Jeremy had mentioned that he wanted an alarm clock, a football and board games to play with his family. With the help and support of MHY donors, **Nichole was able to provide decorations, ingredients to make a cake and gifts for Jeremy's birthday celebration with his family.**

When Nichole visited with them after the birthday, Jeremy excitedly told her about the fun birthday party his mother was able to give him. He shared that he did not think he would have a celebration this year and was surprised and grateful for all he received — especially the gifts that brought his family together to have fun.

BEV'S CHRISTMAS GIVING PROJECT

“ I started my Christmas Giving Project eight years ago and Easter Bags three years ago. I was so impressed with what MHY was doing for the kids after visiting the campus during a Fall Festival that I felt the need to do something for the residents. I met with Amy Smith and asked where there was a need and she said one word, ‘Christmas.’

My church — Ohio UP in Aliquippa — and fellow employees at American Airlines have helped make it possible. Our goal is not just material gifts but to make sure the kids don't feel forgotten and to make them feel special.

One thank you note we received several years ago has become our mantra. It reads: **‘I just want to say thank you for caring about people you never even met or even seen. I'm so thankful for people that care because no one in my family cares so it's good someone does. Because of people like you I haven't given up.’** ”

– Bev Abate




SWIMMING LESSONS

Thanks to a Community Grant from Moe's Southwest Grill, children in MHY's residential programming received swimming lessons and pool safety instruction. Rose E. Schneider Family YMCA instructor Ashley Vranick reported that **fewer than 5% of the children had basic swimming skills when lessons began.** Several youth had to manage past trauma from water incidents, so Ashley kicked off the lessons with safety skills, teaching each child what to do if they accidentally fell in the pool.

“I spent a great deal of time building confidence, cheering them on and celebrating the small successes,” Ashley says.

Today, a majority of the participants have learned one stroke and can swim 15 feet without putting their feet on the pool floor.

A wooden armchair with a slatted back and seat is positioned on a lush green lawn. In the foreground, a calm pond reflects the surrounding greenery. The background is filled with dense, out-of-focus foliage and trees, creating a serene park-like atmosphere. Sunlight filters through the leaves, casting soft shadows on the grass.

“ I started working with MHY because **I was looking to help or make an impact with children.** After working with these boys and young men over the past year, I feel like I’m the lucky one. They have incredible motivation and want to make changes in their lives. They just need the steps to get there.

I’m happy to help in any way I can to guide these boys in that process and help them plan for their futures. ”

- Gary Szafranski,
Volunteer



Your Time Made a Difference

The lives of all the youth served by MHY are heavily impacted by the efforts of our volunteers. We are blessed to have hundreds of volunteers who share their gift of time—and their hearts—with the MHY family.



MHY welcomed over

2300

hours of volunteer service this past year

“Wolf Consulting strives to keep people at the center of everything we do. As a company, we wanted to come together and support an organization that was making a positive impact on our community. We had made donations in the past, but this was our first time engaging in a volunteer activity as a company.”



We knew **MHY Family Services was doing really important work in the community.** We thought that spending time with the children that MHY supports would be a meaningful way to volunteer.

We ended up finding the experience to be everything that we hoped for and more. Not only was it a fun day for the kids at MHY Family Services, it was also a fun day for our staff, too! All the children were actively engaged in everything that we had planned and we saw a lot of smiles and laughs.

We were blown away at their attentiveness and interest in all the different events we had set up — especially the Kona Ice truck that we arranged to make a visit. ”



– Elliott Hyman, CEO

“ I learned a while back that a connection with a kid, even though it may be brief, can have a **positive impact on how they feel about themselves.** ”

We hope and pray that through those game nights and field day activities, that the kids feel valued and cared about. We are likely the only, or one of a very few, non-authoritarian adults in their lives. And yes, adults can laugh and have fun with them. ”

- Richard Wheland, Parkwood Church



“ When I first volunteered at MHY four years ago, I thought I would be working with kids. I ended up working in Ginger’s Store and have come to realize how important it is to the well-being of all the kids here at MHY. ”

We maintain a **high standard of quality in the store** to provide a positive experience to kids who need our TLC. Plus, I really love every minute of working with our crew of volunteers to keep the store in great shape. ”

- Peg Lombardi,
Ginger Store Volunteer

“ I support MHY Family Services because **they offer to kids** who are at risk, who might be lost or forgotten by society, **a path toward a productive, meaningful and satisfying life.** ”

- Mac Purvis Jr.,
Owner of
Purvis Bros. and
Mars Planet Mart

“Thank you for providing our associates the opportunity to volunteer at the Mars Home for Youth. We chose MHY because of their strong ties to the community and the excellent services they provide for at-risk youth and their families.

It was our pleasure to spend Keller Williams Realty annual RED (Renew, Energize, Donate) DAY assisting in beautifying one of your buildings by painting interior rooms and the landscaping of the grounds. We hope to be able to volunteer at MHY in the future.”

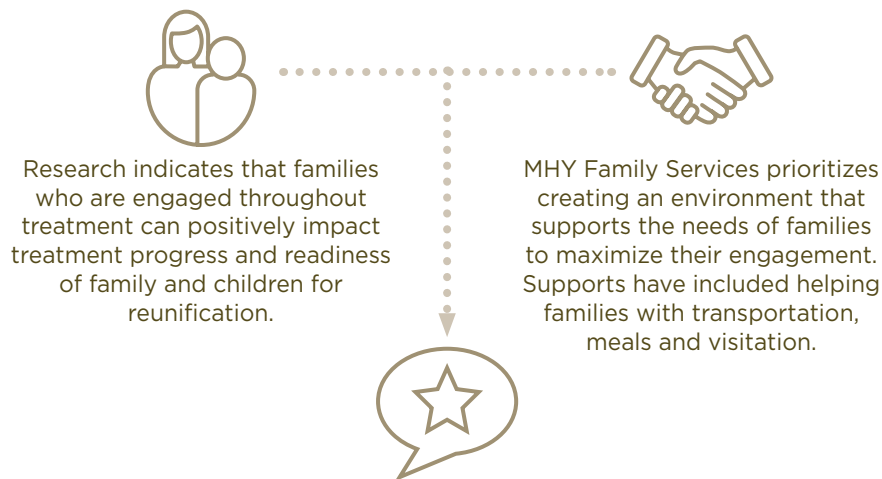
- Cheryl Griffiths,
Keller Williams Realty



Family Center

MHY plans to **establish a Family Center on the MHY Campus** to increase support for children and their families throughout their treatment in residential services. MHY recognizes the benefits of engaging family members during treatment, and with the renovation of a building on the Mars campus, MHY will ensure a safe, nurturing and engaging space.

Utilizing an existing building, MHY plans to convert this space to a comfortable, home-like environment where both youth and family members can meet, develop treatment goals, and practice new interaction and coping skills.



Because of this focus, **90% of families engaged and participated** in their child's behavioral health treatment this past year.

When asked, **97% of families** with children in MHY's residential programs **stated they would recommend MHY** to others in need.

“We support MHY to help create a better world for those who need lifting up during a difficult and challenging time, and to provide opportunity for the children at MHY to be happy, healthy and share their unique gifts with the world.”

- Patrick and Rachael Kerrish

Boswell Gymnasium Renovation

MHY's Boswell Gymnasium is one of the most used buildings on campus, supporting physical education classes, team sports and fun for hundreds of children each year in MHY's residential programs and Longmore Academy.

Built in 1986, the Boswell Gymnasium is in need of some TLC, including new flooring, lighting and security. **A special thanks to Rich-Mar Rotary for leading donations with the contribution and support for the replacement of the gymnasium flooring.**

MHY hopes to find partners to help with additional renovations to give boys and girls a therapeutic space to develop skills and talents, build self-esteem, and reinforce positive exercise habits.


Program Expansion at MHY

During the 2018-2019 school year, **Longmore Academy welcomed new and expanded educational programs** through the generous support of donors (see page 10). Longmore continues to offer programs and experiences that will facilitate academic achievement as well as individual student growth in social and emotional development.

The Community Services team is pursuing expansion in its evidence-based programs that are highly specialized and geared toward serving different populations that lack these proven and effective treatments. It's an opportunity for us to fill a service gap and approach youth and families that are underserved with a program or treatment scientifically proven to be effective.

Supporting our Future



A woman with blonde hair and glasses, wearing a grey t-shirt, is reaching up to hang a large, round, overflowing flower basket. The basket is filled with green foliage and numerous small, colorful flowers in shades of pink, yellow, and blue. A young man with dark curly hair and glasses, wearing a red hoodie over a black t-shirt, is standing next to him, looking up at the basket. They are standing in front of a red brick wall with a window in the background. The scene is outdoors and well-lit.

“I have been a volunteer and donor to MHY Family Services for many years. The children MHY serves have experienced great hardship. It is a privilege and pleasure to support the work of MHY.

- Pamela Schiller,
MHY Board Member and Supporter

“It is a privilege to volunteer and help with the donations at MHY. I admire the mission of this organization in helping young people be the best they can be. My goal is to help staff find what they need so they can focus on their job.

- Debbie Furey,
Volunteer

Donor Report

July 1, 2018 - June 30, 2019

MHY Family Services is able to illuminate a path to a brighter tomorrow for the youth and families we serve only with the support of generous donors like you. Your belief in them reminds us all that there is always reason to hope.

Inspiration Donors

Commonwealth of Pennsylvania Department of
Human Services Reinvestment Plan Grant
Estate of Margery L. Himes
Estate of Martha Lockhart Mason
Kohl's National Giving Program
Lincoln Learning Solutions

Sanctuary Donors

Ms. Laurie Adams
Mr. & Mrs. Thomas P. Bragg
Kerrish Family Trust
Mr. & Mrs. Michael McGarry
Mr. & Mrs. Michael S. Olsen
Rich-Mar Rotary Club
Schwab Charitable Fund
Dr. & Mrs. Ronald and Cindy Thomas
United Way of Allegheny County

Hope Donors

Mrs. Cynthia Bracken
Mr. & Mrs. Fred Clerici
Ms. Judith L. Danielson
Estate of R.A. Wilkinson
Moe's Southwest Grill
Western PA
PennEnergy
Resources, LLC
Ms. Kristen Raghunathan
Repsol Oil & Gas USA, LLC
Mr. & Mrs. Richard Reynolds
Mr. & Mrs. Gregory and Lisa Schiller
Swissvale Presbyterian Church
The Brothers of Connoquenessing Lodge #278
Mr. & Ms. Alan and Ronne Wright

Healing Donors

American Eagle Foundation
Mr. Geoffrey D. Anderson
Assured Settlement Solutions, LLC
Mr. & Mrs. Harry Austin
BNY Mellon Corporation's Community Partnership
Brickyard Park Holdings, LLC.
Dr. Thomas F. Carmen, MD
Mr. John J. Smelko & Mrs. Jill DeStefano Smelko
FBC Chemical Corporation
First Presbyterian Church of Bakerstown
Mr. & Mrs. Ron Fizer
Mr. & Mrs. Blair Gerlach
Mr. & Mrs. Samuel P. Harbison, III
Hill United Presbyterian Church
Mr. & Mrs. Stephen A. Horvath
John and Jean Utz Charitable Foundation
Mr. & Mrs. Kenneth G. Judson

Ms. Susan McGregor
Mrs. Sandra Miller
Mitsubishi Electric Power Products, Inc.
Morgan Stanley Smith Barney, LLC
Mr. & Mrs. Thomas Mott
NextTier Bank
Ohio United Presbyterian Church
Peoples TWP
Perry Highway Lutheran Church
Presbyterian Women of Beaver/Butler
Mr. & Ms. David Profozich
Sixth Presbyterian Church of Pittsburgh
Mr. & Mrs. Bill Sommers
Steel City Select
Mr. & Mrs. Ronald Tambellini
The Hillman Company
Tom Henry Chevrolet
UnitedHealth Group
Mr. & Mrs. Steve Voytovich
W. K. Thomas & Associates, Inc.
W. Moreland & Ruth U. Ernst Charitable Trust
Wardle Family Foundation

Commitment Donors

Aetna Foundation, Inc.
Allegheny Safe & Lock, Inc.
Mr. & Mrs. David Arbuckle
Armstrong
Ms. Teresa Bender
Mr. & Mrs. Stephen Bowers
Mr. & Mrs. Douglas & Kim Brannock
Bull Creek United Presbyterian Church
Women's Association
Caasi, LLC
Mr. & Mrs. Stephen M. Cimini
Mr. & Mrs. Edison Click
Ms. Dawn Crissman
Mr. & Mrs. Nick DeMartini
Mr. Richard Dorman
EQT Corporation
Farmers National Bank of Emlenton
Glade Run United Presbyterian Church
Mr. & Mrs. Dennis and Elizabeth Hays
Ms. Annette S. Hillman
Mr. Eric K. Falk & Ms. Barbara E. Holmes
Mr. Allen G. Kline
Mr. Thomas Parker & Ms. Glenda Larson
Ms. Katie Lo Coco
Mars Area Soccer Club
Mr. & Mrs. James McGinnis
Metz Culinary Management
Ms. Colleen Miller
North Sewickley Presbyterian Church
Ms. Joanna Papada
Mr. Joseph J. Piccirilli
Pitt Ohio Express, LLC
Presbyterian Church USA Foundation
Purvis Brothers, Inc.
Mr. & Mrs. Rory Rightmyer
Saxonburg Memorial Presbyterian Church
Mr. & Mrs. Walter and Pamela Schiller
Mr. & Mrs. Chris and Amy Smith
Mr. & Mrs. Richard Stover

Friendship Donors

Mr. & Mrs. Patrick and Susan Abramowich
Mr. & Mrs. John T. Austin
Dr. & Mrs. Robert L. Baker
Ms. Darla Barie
Mr. Robert M. Bayne
Mr. & Mrs. Henry J. Bernacki, III
Blaufeld Schiller & Holmes LLP
Mrs. Valerie Cannon
Mr. & Mrs. Lukas Carothers
Mrs. Louise Cashman
Climate Systems
Mr. & Mrs. Robert P. Cornell
Cranberry Rotary Community Acct.
Crestview Community Church
Mr. Charlie Curti
Dillon McCandless
King Coulter & Graham LLP
Mr. Maurice Doyle
Erie Insurance Company
Mr. & Mrs. John J. Feraco
First United Presbyterian Church of Rennerdale
Mr. Christopher Flamos
Mr. & Mrs. Hans Fleischner
Mr. & Mrs. Rob Flynn
Mr. Stephen Gierl
Mrs. Eileen H. Grande
Mr. & Mrs. John Hagan
Harsco Metals & Minerals
Mr. & Mrs. Jeff H. Heiger
Ms. Brenda Hill
Mr. & Mrs. Robert and Selina Johnson
Mr. & Mrs. Kishore Khemani
Mr. & Mrs. Paul King
Ligo Architects, Inc.
Lope, Casker & Casker
Mr. Robert Mainwaring
Mr. Timothy W. McGuire & Ms. Donna Blackmon
Ms. Rebecca Miller
Mrs. Kathy Mills
Ms. Dana Muth
Mr. & Mrs. Gary R. Orosz
Ms. Janice Schmitt
Ms. Suzy Shay
Mr. & Mrs. R. J. Sippel
Mr. Richard L. Smith
Mr. & Mrs. Donald and Amy Tacik
United Way of Butler County
Vogel Disposal Services Inc.
Mr. & Mrs. Peter Watt-Morse
West Sunbury United Presbyterian Church
Mr. Timothy Williams

Support Donors

Mr. & Mrs. Paul Aiello
Ms. Sallie Alviani
AmazonSmile
Mr. & Mrs. Larry Auman
Ms. Adrianna Avolio
Mr. & Mrs. David Baird
Mr. Christopher Bakken, Jr. & Mrs. Barbara S. Bakken
Mr. & Mrs. Joe Ball
Mr. William F. Barron
Ms. Earlene Bartlett
Basilone Executive Search & Staffing
Ms. Heather Baumgartel
Mr. William Been
Ms. Therese Beers
Mr. & Mrs. Brian S. Behm
Ms. Louise A. Benjamin
Mr. Don Bergbigler
Ms. Melissa Ann Bitzer
Mr. & Mrs. Steven Blair
Mr. & Mrs. Michael Bocheff
Ms. Elizabeth Boff
Boff Associates, LLC
Mr. & Mrs. David Boyd
Ms. Julie Brand
Ms. Lynn Brimmeier
Ms. Florence Bronder
Mr. & Mrs. Kenneth L. Bronder
Mr. Jerry Smith & Mrs. Diana Brubaker-Smith
Ms. Erin Bruner

GIVING LEVELS

Inspiration Donors\$10,000+
Sanctuary Donors \$5,000 to \$9,999
Hope Donors..... \$2,500 to \$4,999
Healing Donors \$1,000 to \$2,499
Commitment Donors.....\$500 to \$999
Friendship Donors\$250 to \$499
Support Donors up to \$249

♥ denotes an MHY employee or board member

Mr. & Mrs. Chris Buchanan
 Ms. Sally Bunnell
 Butler County Alliance for Children
 By The Wayside Coffee
 C W Howard Ins. Agency Inc.
 Mr. & Mrs. Jim Cale
 Callery, LLC
 Calvin United Presbyterian Church- Women's Association
 Mr. & Mrs. Jason Campbell
 Mr. & Mrs. Ron Campbell
 Ms. Violet Campbell
 Carl A. Kinsey - Ronald N. Volz Funeral Home, Inc.
 Mr. & Mrs. Nathan H. Carnahan
 Ms. Sandra Cernick
 Mr. Glen Chaffee
 Ms. Johnna Chicots
 ChiroEvolution
 Mrs. Kelly Ciccone
 Mr. & Mrs. Michael P. Cisek
 Mr. & Mrs. James Clark
 Classic Automotive, Inc.
 Mr. & Mrs. David Clifford
 Mr. Ron Coddington
 Mr. & Mrs. Grant Coffield
 Ms. Hilda Colflesh
 Mrs. Sherri Confer
 Mr. Mason Coone
 Ms. Natalie Cox
 Crete Presbyterian Church - Clara Henderson
 Missionary Society

Cunningham Shanor, Inc.
 Ms. Caterina V. Cuzzocrea
 Ms. Sandy DaRe
 Mr. Tim Deglau
 Mr. & Mrs. Isaac Devyver
 Mr. Joseph J. Dietz & Mrs. Cheryl Wise
 Mr. & Mrs. Dave Dollhopf
 Mr. & Mrs. Paul Domasky
 Mr. Rob Donaldson
 Mr. Bryan Doner
 Mrs. Judy Doughty
 Douglas Insurance Services
 Dr. James S. Doyle
 Drs. Gatty, LLC
 Duncan Financial Group
 Dutilh United Methodist Church
 East Union Presbyterian Church
 Mr. & Mrs. Ron Eckard
 Mr. & Ms. Edward P. Elinski
 Elkton Presbyterian Church
 Mr. & Mrs. William H. English
 Executive Developers, LLC
 Mr. & Mrs. Larry Feevey
 Mrs. Wendy Ferris
 Mr. Zach Ferris
 Mrs. Jamie Fiore
 First Presbyterian Church
 First Presbyterian Church - Bakerstown
 Mrs. Maria Fisher
 Mr. Nicholas Fisher

Mr. William Fisher
 Mr. & Mrs. Ken Fleeson
 Mr. & Ms. Michael Foran
 Ford Business Machines, Inc.
 Mr. & Mrs. Cyril A. Fox
 Mr. & Mrs. Thomas L. Franceschina
 Mr. Alan Frankel
 Ms. Kay Frederick
 Fresh Thyme Giving Bag and Giving Tag
 Program Bags 4 My Cause
 Ms. Darlene Fryer
 Attorney LeeAnn Fulena
 Fun Fore All
 Ms. Jan Galbreath
 Ms. Kimberly Gallagher
 Rev. & Mrs. James Gascoine
 The Gearhart Family
 Mr. & Mrs. Robert E. Gerhart
 Mrs. Yvonne Geruschat
 Ms. Alicia Gonzalez
 Ms. Mandy Gonzalez
 Mr. & Mrs. Leonard Grada
 Mrs. Mary Green
 Ms. Mary Louise Green
 Guardian Protection Services
 H.P. Starr Lumber Co., LLC
 Mr. Hugh G. Hachmeister & Mrs. Sandra McClelland
 Hachmeister
 Ms. Marsha Haley
 Ms. Sharon Hamlett
 Mr. & Mrs. Robert P. Hanley
 Happy Camper Cakes

Mr. & Mrs. David Hartmann
 Mayor & Mrs. Gregg Hartung
 Mr. & Mrs. Michael and Karen Harvey
 Mr. Robert E. Hauser
 Mr. Arthur Hawkins
 Mr. Clayton F. Heberling
 Hefren-Tillotson, Inc.
 Mr. Gary Heinze
 Mrs. Beth Henke
 Mr. Paul Holcomb
 Mr. James Segedy & Mrs. Lisa Hollingsworth-Segedy
 Mr. Timothy D. Holt
 Holy Trinity Greek Orthodox Church
 Mr. Brian Hood
 Mr. & Mrs. Chad Horne
 Ms. Lydia Horvath
 Mr. & Mrs. Mark Hunkele
 Rev. Lesley Imler Shoup
 Mr. & Mrs. Michael B. Ingram
 Mr. & Mrs. Dennis Jackson
 Ms. Kelly Jedry
 Mr. John M. Johnston
 Mr. & Mrs. David Kalla
 Mr. & Mrs. Patrick J. Kane
 Mr. & Mrs. Paul E. Kehm, Sr.
 Ms. Donna Kihn
 Mr. & Mrs. Steven C. Kish
 Mrs. Edith A. Klebacha
 Mr. & Mrs. Michael Koenig
 Mr. James Kokoros
 Mr. & Ms. Mark Kopar

Mr. & Mrs. James W. Kopp
 Mr. & Mrs. Michael Kowalski
 Mr. & Mrs. Don Krafjack
 Ms. Rachel Kresge
 Mrs. Mary Kroen
 Krol Media
 Mr. & Mrs. Gregg Kunkelmann
 Ms. Charlene Kurpakus
 Mr. & Mrs. Mark Laffey
 Mr. John H. Lambert
 Mr. & Mrs. Bob Lancaster
 Mr. & Ms. Michael Lang
 Mr. Robert Lauer
 Ms. Denise Layne
 Mrs. Jody Lenhart
 Mrs. Megan Lenz
 Mr. & Mrs. Jack Lewis
 Lieber, Hammer, Huber & Paul
 Mr. & Mrs. Paul Lombardi
 Lydia Circle PWC
 Ms. Doris Lynch
 Ms. Beth Lytle
 Mr. & Mrs. Sean Magee
 Magee Plastics
 Mr. Ashish Maini
 Mr. & Mrs. Harry Makinak
 Mr. Tasin Malik
 Marburger Farm Dairy
 Dr. Norman Marek
 Mars Area Middle School
 Mars Area Middle School Flower & Gift Fund
 Mars Memorial Association Post 7505

Mr. & Mrs. Jeffrey J. Martin
 Mr. & Mrs. Dean Matthews
 Mr. & Mrs. Glen H. Maus
 Mr. & Mrs. Al and Linda Mazuch
 McCall Scanlon & Tice, LLC
 Mrs. Linda McCleary
 Ms. Loretta McElhattan
 Dr. & Mrs. Gary McHugh
 Mr. & Mrs. Thomas McManus
 Ms. Annamary McMullen
 Mr. & Mrs. David McNally
 Mr. Dennis & Dr. Sari McNamara
 Ms. Cindy Meredith
 Ms. Carolyn Miller
 Mr. & Mrs. Patrick Miller
 Mr. Tim Miller
 Mr. Jeffrey Mitchell
 Mr. Brent A. Mocuiski
 Mon-D-Aid & Cleanit Co. Inc.
 Mrs. Caroline J. Montgomery
 Mr. Christopher Montgomery
 Mr. Douglas Montgomery
 Mr. & Mrs. Ryan Moran
 Mr. & Mrs. Benjamin D. Morelli
 Mt. Nebo United Presbyterian Church - WWC
 Ms. Susan Mueller
 Ms. Marcia Murray

Ms. Jennifer Navarrete
 Mr. & Mrs. William Nethen
 Newcomer's Northwoods Ladies Bowling League
 Newman Chiropractic Center
 Mr. & Mrs. Robert Nolan
 Northmont Brotherhood Club
 Northwest Savings Bank
 Mr. Charles Norton
 Mr. & Mrs. Christopher O'Connell
 Ms. Patricia O'Connor
 Ms. Arlene Ophof
 Mr. David Oreski
 Mr. & Mrs. Zachary Oshlick
 Paracca Interiors, Inc.
 Ms. Jill Perencevic
 Mr. & Mrs. John Petricko
 Pfeifer Hardware
 Mr. Jerry Pflug
 Ms. Ruth Pickering
 Pita My Shawarma
 Mr. & Mrs. Stanley D. Polivka
 Presbyterian Women of Northmont UP Church
 Pulaski United Presbyterian
 Mr. Justin Pulasky
 Mr. & Mrs. Christopher J. Puma
 Quality Emergency Medical Services
 Ms. Amy Raducz
 Mr. & Mrs. Russell H. Raisig

Dr. & Mrs. N. Ramakrishna
 Mr. & Mrs. James Rankin
 Mr. & Mrs. Hargovind Rathore
 Mr. & Mrs. Walter L. Rausch
 Ms. Christine Raymond
 Rehoboth Presbyterian Church
 Mr. & Mrs. Jim Reynolds
 Mrs. Lee Ann Riner
 Mr. & Mrs. Thomas Roberts, III
 Mr. & Mrs. Robert and Kathi Robinson-Dassel
 Ms. Mary-Jo Rodgers
 Ron's Aluminum Company
 Mr. & Mrs. Edward N. Roolf, Jr.
 Mr. & Mrs. D. Craig Russell
 Mr. & Mrs. David Rust
 Mr. & Mrs. Henry W. Ryals
 Mr. and Mrs. Joseph Sabol
 Mr. & Mrs. Robert W. Santillo
 Ms. Lisa Scalone
 Mr. & Mrs. Edmund Schantz
 Mr. & Mrs. Douglas Schiffer
 Mr. Chuck Schramm
 Mr. & Ms. Chad Scott
 Sebring Presbyterian Church

“We support MHY because family is at the center of everything we do here at Tom Henry Chevrolet. Creating a stronger community begins with supporting the families that surround us.

When MHY pours into the youth that come through their doors, they are not only making an impact in that moment, but also an investment in the future.”

- Tom Henry Chevrolet



MHY earned expedited re-accreditation through COA, Council on Accreditation, as a result of not having any non-compliance ratings on fundamental standards. COA Accreditation signifies that MHY Family Services effectively managing its resources and provides the best possible services to all of its stakeholders.

In-Kind Support

Sebring Presbyterian Church Presbyterian Women
Mrs. R. Elaine Settlemyre
Mr. & Mrs. Kenneth Shane
Mr. & Mrs. Raymond Shinsky
Ms. Donna Simpson
Slate Lick United Presbyterian Church
Mr. & Mrs. Phillip H. Smith
Mr. Philip Smith
Ms. Sylena Smith
Ms. Rachel Snider
Ms. Lynnette Snyder
Ms. Tabitha Snyder
Mrs. Doris Sopher
Speckled Hen Chocolate Co.
Ms. Amy Spehar
Mr. & Mrs. Martin Spithaler
Springfield Grille Corporate Office
St. Pauls United Methodist Church Women
St. Thomas Anglican Church
Mr. Fred Stambaugh
Mrs. Michelle Stanchina
Mr. H. Paul Starr, Jr
Ms. Joan Steighner
Sterling Property, LLC
Mr. David Stevenson
Mr. & Mrs. Brian Stewart
Mr. & Mrs. David Stewart
Mr. & Mrs. Kyle Stewart
Mr. & Mrs. Chuck Story
Mr. & Mrs. Joshua Sutter
Mr. & Mrs. Matthew Szigety
Ms. Eloise Tacik
Mr. & Ms. Craig Thompson
Mrs. Carole Timblin
Mr. Jay Tray
Truist
Mrs. Ruth A. Tully
Mr. & Mrs. David S. Turner

Twinbrook Animal Clinic
United Way of Monongalia & Preston Counties Inc.
Mr. & Mrs. John Utz
Valencia Presbyterian Church
Mrs. Jennifer Veneziano
Ms. Judy Verbanic
Mr. & Mrs. Joshua Verdi
Mr. & Mrs. Edward L. Vogel
Ms. Anita Wagner
Mr. & Mrs. Joseph Walker
Mr. & Mrs. Cameron Warba
Mr. & Mrs. Richard M. Ward
Ms. Molly Wawrzynski
Ms. Carolyn S. Weisenstein
Mr. John Welsh, Jr.
Mrs. Joyce Welsh
Wexford Community United Presbyterian Church
Ms. Dee White
White Oak Springs Presbyterian Church
Mr. & Mrs. Steven R. Williams
Mr. & Mrs. James Wilson
Ms. Tina V. Wilson
Windrose Animal Hospital
Mr. & Mrs. Kirk J. Winstead
Mr. & Mrs. Kurtis Wolf
Mr. & Mrs. Paul Wolf
Mr. & Mrs. Gary C. Woodward
Mr. Charles Wynn
Mrs. Alicia Zevola
Mr. & Mrs. John Zurisko

13th Hour Entertainment
4imprint
Ms. Bev Abate
Mrs. Kirsten Aguirre
Ms. Leah Albert
Ms. Meg Alexander
Allegheny Presbyterian Church
Allegheny United Pres Church - WA
The Allshouse Family
Mr. Tim Altimus
American Eagle
Mr. & Mrs. Dave Anderson
Mrs. Monica Angoff
Animal Friends
Mrs. Daneen Antonucci
Mr. Charles Applegate
Ms. Laurie Arnott
Mr. James Ashbaugh
Mr. Chris Ashmore
Mr. & Mrs. Jeffrey C. Astbury
Mr. Josh Babir
Ms. Judy Babish
Mr. & Mrs. Gregg Baldwin
Mrs. Emily Baran
Mr. Greg Barber
The Barbish Family
Mr. Daniel Barna
Mr. Thomas Barrage
Ms. Joleen Barshick
Ms. Jennifer Bear
Mrs. Jessica Beckert
Ms. Judy-Ann Bellefleur
Mr. & Mrs. Ronald Bennett
Mrs. Janet Biery
Mr. & Mrs. Roger Black
Mr. Robert Bleem
Mr. & Mrs. Randall Blincow

Mr. & Mrs. William Blocksom
Ms. Marcy Bogdanich
Mr. Rich Boguszewski
Mr. & Mrs. Rich Boles
Mr. Matt Bonosky
Mr. Mark Bonsmann
Mrs. Lisa Bossory
Ms. Leah Boyle
Bradford Woods Elementary School
Ms. Barb Brandt
Mr. & Mrs. Douglas D. Brannock
Ms. Chris Brennan
Ms. Amy Brethauer
Mr. & Mrs. John Brohm
Mr & Mrs. Owen & Cori Brown
Mr. & Mrs. Robert Brown
Ms. Rikki Buccier
Ms. Denise Buchanan
Mr. Mark Buchek
Ms. Debbie Bukowski
Ms. Kim Burns
CCUPC Preschool
CR Bard
Ms. Mindy Cable
Mr. & Mrs. Jim Cannon
The Cannon Family Caps for Kids
Mrs. Jamie Carlson
Mr. John Carney
Ms. Colleen Carver
Ms. Erin Ceh
Ms. Kara Challingsworth
Mr. & Mrs. Frank Chappel
Ms. Beth Charlier
Mrs. Wai Shan Cheng
Chick-fil-A
Ms. Lidija Christy
Mr. Dale Cinski
Mr. Kenneth Cloonan

Mr. Christopher Cobern
Ms. Adina Cohen
Ms. Victoria Colaanni
Mr. & Mrs. Jeff Cole
Mr. Dave Collette
Mr. Bruce Conley
Ms. Nicole Connolly
Ms. Sara Coon
Mr. Howard Cope
Mr. & Mrs. Mike Corrigan
Ms. Marie Cortopassi
Costco
Mr. Patrick Costigan
Ms. Becky Courson
Mr. & Mrs. Dave Covalleski
Cranberry Community United Presbyterian Church
Crossroads Presbyterian Church
Women's Association
Mr. & Mrs. Jason Crowley

Mr. Larry Cunningham
Ms. Jessica Danaher
Mr. Dan Danka
Dave's Country Meats
Mr. Don DeCaro
Mr. Chris DeCree
Ms. Kristina DeLisio
Ms. Lena DeLucia
Mr. Brian Dean
Ms. Monica Dean
Mr. Ron Denbis
Mr. Michael Denham
Mr. & Mrs. Timothy J. Detisch
DiBella's Submarines
Mr. Nicolas DiSalvo
The Dillner Family
Ms. Deana DoBosh
Ms. Natalie Donaldson
Mr. Tom Donaldson
Mr. & Mrs. Marlin Doner
Doodle Bugs
DoubleTree by Hilton
Hotel Pittsburgh - Cranberry
Mrs. Heidi Downs
The Duff Family
Mr. & Mrs. Jeff Dula
Ms. Kelly Dunn
Ms. Nancy Duss
Eat'n Park Hospitality Group, Inc.
Ms. Lacey Ecker
Ms. Valerie Elliott
Ms. Kassey Ellis
Ms. Jodie Erickson
Ms. Mary Ellen Esquino
Ms. Sylvia Eve

Mr. & Ms. Chris Eyerman
Mr. Greg Eyerman
Mr. Mark Eyerman
Mr. & Mrs. John Falcettoni
Ms. Carrie Falcone
Ms. Kim Fecich
Fed Ex Ground, North Pittsburgh Station
Ms. Linda Felkar
Mrs. Lynn Feuer
Ms. Missy Fierst
The Fischers Family
Ms. Kelly Flis
Ms. Mary Florida
Mr. Robert Ford
Mr. Jason Forsythe
Ms. Audra Foster
Mr. David Fox
Mr. Vic Franceschini
Mr. Anthony Frech
Mrs. Bonnie Freeman
Ms. Arlene Frey
Mr. Michael Fuchs
Ms. Fran Fuhrer
Mr. Michael Fullerton
Ms. Debbie Furey
Mrs. Christine Gadowski
Mr. Mike Gaffney
Mr. & Mrs. Bryan Galus
Mr. & Ms. Jeff Gant
Mr. & Mrs. Joe Garrity
Ms. Sara Gaskill
Ms. Judy Gerega
Ms. Michelle Glaeser
Mrs. Polly Goettler

Ms. Karen Goul
Mr. & Mrs. David Gozzard
Ms. Ashley Graham
Mr. Ryan Graham
Ms. June Gravitte
Mrs. Mario Greco
Mr. Ian Greenaway
Ms. Cheryl Griffiths
Ms. Judi Halavanja
Ms. Marie A. Haller
Mr. & Mrs. Jim Hannon
Mrs. Roz Hare
Mr. Steven Harris
Ms. Maria Hartung
Ms. Beth Haskins
Mr. & Mrs. Mark Heidenreich
Mrs. Leslie Heintz
Mrs. Jill Henderson
Mrs. Emily Hendricks
Mrs. Barbara Herman
Ms. Bonnie Herp
Mr. & Mrs. John Herp, Jr.
Ms. Polly Hicks
Mr. Mark Hieber
Mr. & Mrs. Jeremy Hill
Ms. Nancy Hill
Ms. Carole Hillard
Mr. Don Hixon
Mr. Karl Hoak
Ms. Penny Hoak
Mr. Chris Hoburg
Ms. Lori Hodge
Mr. & Mrs. Dave Hoffman

“NexTier Bank supports many organizations within our communities, and MHY Family Services is one of our favorites. MHY Family Services is an invaluable asset for our local youth and their families, striving to improve their skills to re-engage with home, school and community.”

NexTier Bank looks forward to following the successes of MHY Family Services and their youth for many years to come.”

- Carol Achezinski, Senior Vice-President

“I have been blessed with a strong supportive family that gave me a great foundation for life. I want to be a part of providing that for kids that don't have it.”

- Sue, Volunteer supporting MHY's Human Resources Department

In-Kind Support

Mr. Mark Hogan
Mr. Rich Holsinger
Holsinger, P.C.
Hope Lutheran Church
Mrs. Michelle Hosack
Mr. Thomas Hosack
Miss Sara Hosey
Ms. Julie Houk
The Howe Family
The Hrobak Family
Ms. Leslie Hughan
Mr. Brian Hulek
Mr. Tim Humes
Ms. Rae Isaac
Ms. Gina Isabella
Ms. Carrie Jablunovsky
Ms. Deb Jackson
Ms. Tammy Jackson
Ms. Kara James
Mr. Jamie Jeffrey
Mrs. Joan Johnson
Ms. Zena Johnson
The Johnsons
Mrs. Cindy Jones
Ms. Patti Jordan
Ms. Laura Kacy
Mr. Randy Kaelin
The Kania Family
Ms. Emma Kapoor
Ms. Ashley Karam
Ms. Jennifer Karner
Mrs. Kristin Karsh
Mr. Richard Kasowski

Mr. & Mrs. Jim Kay
Mr. Sean Keefe
Ms. Diane Kemmerer
Dr. Brianne Kemp
Kennedy's Auto Sales
Mrs. Marsha King
Ms. Sharon King
Mr. Ted Kink
Mr. Marc Kiraly
Mr. & Mrs. Bryan Kirby
Ms. Caitlin Kish
Ms. Kim Klaas
Ms. Marsha Klaus
Mr. & Mrs. Ed Klein
Ms. Maggie Klimczyk
Ms. Stacy Kloc
Ms. Jennifer Klukan
Mr. Brendan Knox
Ms. Carol Knox
Anonymous
Mr. & Mrs. Chris Koss
Ms. Linda Kotzbauer
Ms. Melissa Krahne
Ms. Lisa Kramm
Mr. Thomas Kredaris
Mr. & Mrs. Bruce
Kremmel
Mr. Kenny Kriberney
Mr. Trevor Kriner
The Krisby Family
Ms. Veronica Krol
The Kuehmel
Family

Ms. Lisa M.
Kumpfmiller
Ms. Jamie Kunchick
Mrs. Missy Kusar
Mr. Thomas Kvederis
Ms. Barb Lambe
Mr. & Mrs. Mark
Langhans
Ms. Ann Larese
Ms. Susie Lebeda
Ms. Lorraine Lee
Ms. Lisa Lehman
Mr. Stephen Leonard
Mr. Barry Levine
Mr. & Mrs. Jim Leydig
Mr. John Linko
Mr. Charles Lisman, Jr.
& Mrs. Terri Lisman
Mrs. Marcy Littell
Mr. & Mrs. Ed Little
Ms. Annette Locke
Ms. Cindy Loncaric
Mr. & Mrs. Robert
Lorence
Ms. Lisa Love
Mr. & Mrs. William A.
Lowenberger
Mr. & Mrs. Denny
Lowers
Mr. Jeff Lutes
Ms. Becky Lutz
Mr. Brian MacDonald
Mr. Stephen MacIntyre

The Macierowski
Family
Mr. & Mrs. Michael
Macon
Mr. Michael Manfresca
Ms. Lizzy Mann
Mr. Nicholas Mariano
Ms. Linda Markovic
Mr. & Mrs. Brian
Marriner
Mars Agway
Mars Area High School
Mars Medical Center
Mars Soccer Booster
Club
Mars Stars Jump Rope
Team
Mr. & Mrs. Dan
Marsteller
Mrs. Eileen Martinez
Mrs. Melissa Mascari
Ms. Meghan Mason
Ms. Kathryn Matejka
The Mateski Family
Ms. Elena Matthews
Mrs. Maria Matthews
Ms. Denise McCann
The McClure Family
The McCombs Family
Mr. Adam
McCormick
Ms. Lynn McDonough
Mr. Alec McEwen
Ms. Sherri McEwen
Mr. John McFadden
The McGuigan Family
Mr. & Mrs. Pat McGuire
Ms. Becky McKinney
Mr. Mark McLaughlin
Mr. Sonny McManigle
Ms. Cindi McNear
Ms. Kathy McPherson
Mrs. Beth Meahl
Mrs. Lorie Meek
Mr. Matthew Mehaffey
The Meiers Family
Ms. Mary Anne Mendel
Ms. Kathy Merriman
Ms. Kristin Merriti
Ms. Beth Michel
Ms. Mary Lou Miller
Ms. Tatyana Mitchell
Mrs. MaryAnne Moore
Moore Macarons, LLC
Miss Emma Morgan
Ms. Mary Morgan
Mr. Rick Morgan
Morgan Stanley
Ms. Virginia Morlino

The Morrow Family
Ms. Marilyn Mosso
Mr. Michael Moze
Mt. Pleasant United
Presbyterian Church
- Wexford
Mr. & Mrs. Dave
Murphy
Mr. Paul Murphy
Mr. & Mrs. Greg Muse
Ms. Phyllis Musial
Mr. Joseph Mycka
Ms. Nancy L. Nahi
Ms. Maharajom
Natarajam
Mr. Luis Navedo
Ms. Kathy Nee
Ms. Lane Neff
Mr. Kevin Neigh
Ms. Carol Neilson
Ms. Theresa Nelson
Ms. Mary Nesbitt
Mr. Michael Netzet
Mr. Jacob Nichols
Mr. Keith Nichols
Rev. & Ms. Roger
Nicholson
Mr. Jimmie Nicolazzo
Mr. & Mrs. Bart
Niemeyer
Mr. Chad Nikola
Ms. Tiffany Nolan
North Allegheny
Intermediate High
School
North Catholic High
School
Northway Christian
Community Bible
Group
Mr. Dan O'Brien
Mr. & Mrs. Brendan
O'Connell
Ms. Kristen Oakes

“Mitsubishi Electric Power Products, Inc. is dedicated to helping young people, including their families, maximize their own potentials! Life is a gift, and contributing to MHY offers us the privilege, opportunity, and responsibility to give something much more to our local community.”

- Julie Ritenour, Export Import Consultant

Mr. & Mrs. Alex
Obukhov
Mr. George Ocheltree
Olive Garden Italian
Restaurant
Ms. Ruthi Orloski
Mr. Rob Osborn
Mr. Steve Osborne
Mr. & Mrs. David Otto
Mr. James Pace
Ms. Jane
Paramalingam
Parkwood United
Presbyterian Church
The Pasko Family
Mr. Nicholas Passaretti
Ms. Autumn Patterson
Mr. Chris Paylo
Mr. & Mrs. John
Peocquidio
The Persichinis Family
Mrs. Stacey Pfeifer
Mr. Justin Plocquidio
Pittsburgh Symphony
Orchestra
Ms. Jacquie Poloka
Mrs. Angie Popa
Mr. Greg Powell
Mr. & Mrs. John Price
Print King, Inc.
Quality Gardens
Ms. Michelle Rabe
Mr. J. Nicholas Ranjan
Mr. & Mrs. Paul Rankin
Mrs. Sandra Ray
Ms. Grace Raykovics
Ms. Mia Raynovich
Mr. & Mrs. Anthony
Recchia
Ms. Marilyn Reed
Mr. & Mrs. Jim Reeping
Mr. Mike Reese

Mr. & Mrs. Dennis
Reilly
Ms. Mary Rekich
Ms. Annette Relue
Mr. & Ms. Kevin Relve
Ms. Michele Repko
Ms. Kris Reutzel
Mr. Brett Reynolds
Ms. Tara Reynolds
Bales
Rhoads Orthodontic
Specialist
Mrs. Belinda
Richardson
Ms. Kelly Riddle
Mr. Brad Rigby
Mrs. Shannon Rinaman
Ms. Alexis Riner
Mr. & Mrs. Ronald Ring
Ms. Becky Rinker
Ms. Gail Riska
Mr. Don Risko
Mrs. Sue Ritchey
Mr. & Mrs. Gene Ritz
Ms. Natalie Roberson
Mr. Terry Roberts
Ms. Karen Robison
Mr. Travis Rogan
Mr. Dan Romanelli
Mr. Shawn Ross
Mr. Andrew Rupp
Mr. John Ryan
Mrs. Ronda Ryan
Ms. Rhonda Ryman
Mr. & Mrs. John Salak
Mrs. Leslie Saliba
Mr. & Mrs. Ron
Salisbury
The Salopek Family
Mr. & Mrs. Frank
Salpietro
Ms. Ann Samarin

Ms. Elizabeth Sanders
Ms. Briana Sandman
Ms. Lori Scalitsee
The Scarito Family
Ms. Danielle Scherer
Ms. Sara
Schneidtmiller
Mr. & Ms. George
Schoedel
Ms. Jennifer Schrauder
Ms. Penny Schroth
Ms. Melanie Schultz
Mr. & Mrs. Bill and
Laura Schweiger
Mr. & Mrs. Chuck
Seibert
Ms. Becky Seigworth
Mr. & Mrs. Jim Sekel
Ms. Emily Selz
The Senors Family
Serene Hair Studios
& Spa
Ms. Namrita Sethi
Mr. Chet Shaffer
Ms. Marcy Shaffer
Ms. Ruth Shaffer
Mr. & Mrs. Brian J.
Shanahan
Ms. Jamie Shebek
Mr. & Mrs. Ron
Shemela
Mrs. Mary Ann Shilts
Mr. Jim Shiperly
Shop 'n Save
Mr. & Mrs. Joseph
Shutak
Mrs. Stacy Siegal
Ms. Amanda Sinton
Ms. Austen Skopov
Ms. Traci Sloan
Mrs. Lauren Smith
Mr. Rod Smith



Mr. Ryan Smith
 Ms. Kalynn Sokolak
 Mr. Tim Sokolak
 The Soltis Family
 Mr. Matt Spak
 Mrs. Lauren Splane
 Mr. Gerald Sproull
 St. Andrews
 Presbyterian Church-
 Sewickley
 St. John & Paul
 Catholic Church
 St. Kilian Church
 Mrs. Bobbie Stander
 Mrs. Linda Starosta
 Mr. Dave Steigerwald
 Ms. Regan Steinert
 Mr. & Mrs. Mike
 Stephens
 Ms. Heather Stevens
 Mr. & Mrs. Art Stewart
 Mr. Gregg Stewart
 The Straub Family
 Mr. & Mrs. David Studt
 Mrs. Cindi Suld
 Mr. Koen Sundie
 Mr. Don Super
 Supremo's Pizza
 Mr. Rob Szarcon
 Ms. Connie Taylor
 Mr. & Mrs. Jim Taylor
 Mr. Joe Taylor
 The Taylor Family
 Mr. & Mrs. David
 Thayer
 The Bair Foundation
 The Education
 Partnership
 The Thornton Family
 Thrive Chiropractic
 Mr. & Mrs. Jim Thunell
 Mrs. Sarah Titus
 Mr. & Mrs. Gregory
 Tobias
 Mr. David Todd
 Ms. Julie Tomasovich
 Ms. Cathy Torhan
 Ms. Linda Torrence
 Ms. Krystina Toth Town
 Mrs. Colleen Trosky
 Dr. David & Elizabeth
 Troxell
 Ms. Elizabeth Tuell
 Mr. John Tully
 Ms. Debbie Tutak
 Ms. Jessica Uhl

Ms. Lindsey Ulizio
 Mr. Samuel Ussack
 Mrs. Carlee Valiknac
 Mrs. Abby Van Korlaar
 Mr. & Mrs. William
 VanKirk
 Ms. Jennifer Vanasdale
 Mr. & Mrs. Bill Vance
 Ms. Andrea Vasquez
 Ms. Jackie Vavala
 Mrs. Christine Vazquez
 Victory Family Church
 Mr. Vince Viviano
 Ms. Debbie Vogel
 Mr. & Mrs. David Vorp
 Ms. Sharon Wachtel
 Mr. Nevan O'Donnell &
 Ms. Leah Walters
 Mr. & Mrs. Allen
 Warkaske
 Ms. Karen Warsing
 Mr. Jerry Watson

Mr. Rich Watson
 Mr. & Mrs. John
 Watson
 Ms. Jenny Webb
 Ms. Cheryl Weis
 Ms. Caralee Welch
 Mr. Brad Wetzel
 Mr. Joe Wharton
 Mr. & Mrs. Rich
 Wheland
 Mr. & Mrs. Brandon
 White
 Ms. Valerie Wieloch
 Mr. & Mrs. Tom Woitas
 Ms. Mandy Yakubisin
 Mr. Aaron Yonash
 Ms. Lynn Young
 Mrs. Jessica Yunk
 Mr. Bill Zitelli
 Ms. Darlene Zubik
 Ms. Lori Zubik
 Mr. Richard Zweig



In memory of

Anne Sloan & Sara Harding
 from Mr. & Mrs. Thomas P. Bragg

Paul & Barbara Hendricks
 from Mr. Jerry Smith &
 Mrs. Diana Brubaker-Smith

Linda Hollister-Crocker
 from Mr. William Fisher
 Mr. & Mrs. Cyril A. Fox
 Mr. & Mrs. David Hartmann
 Mr. Robert E. Hauser
 Ms. Doris Lynch
 Mrs. Sandra Miller
 Mr. & Mrs. Russell H. Raisig
 Mr. & Mrs. Jim Reynolds
 Mr. & Mrs. Thomas Roberts, III
 Mr. & Mrs. Gregory & Lisa
 Schiller
 Mr. & Mrs. Chris & Amy Smith
 Mr. & Mrs. Joshua Sutter

Betty & Walter Mainwaring
 from Mr. Robert Mainwaring

Douglas Raymond McAvoy
 from Mars Area Middle School
 Flower & Gift Fund

Grace N. Click
 from Katie Lo Coco

Mrs. Grace Click
 from Mr. & Mrs. Thomas McManus

Ellen Liebold
 from Ms. Annamary McMullen

Jill Allen
 from Mr. & Mrs. Joseph Sabol

My Wife Coulia Smith
 from Mr. Richard L. Smith

Dale Sopher
 from Mrs. Doris Sopher

In honor of

Florence Bronder
 from Mr. & Mrs. Kenneth L. Bronder

Fellow MHY Board Members
 from Mrs. Valerie Cannon

Carly Driscoll
 from Mr. & Mrs. Dave Dollhopf

Mary Ann Fasciani
 from Ms. Patricia O'Connor
 Mr. & Mrs. Brian Stewart

Caroline Montgomery
 from Mr. Christopher Montgomery
 Mr. Douglas Montgomery

Every effort has been made to accurately reflect gifts received between July 1, 2018 and June 30, 2019. Please contact Amy Smith, Director of Development at 724-625-3141 x228 to address inadvertent omissions or errors.

MHY Family Services is a 501(c)3 non-profit organization. A copy of the official registration and financial information may be obtained by calling 800-732-0999. Registration does not imply endorsement.



MAIN CAMPUS AND LONGMORE ACADEMY

521 Route 228
 Mars, PA 16046
T: 724-625-3141
F: 724-625-2226
mhyfamilyservices.org
info@mhyfamilyservices.org

COMMUNITY SUPPORT CENTERS

Allegheny County:
 820 Evergreen Ave.
 Pittsburgh, PA 15209
T: 412-408-3693
F: 412-408-3692

Beaver County:
 109 Rinard Ln.
 Rochester, PA 15074
T: 724-775-1895
F: 724-477-0096

Butler County:
 220 S. Washington St.
 Butler, PA 16001
T: 724-256-5037
F: 724-477-0096

**Clarion, Forest and
Venango Counties:**
 1243 Liberty St.
 Franklin, PA 16323
T: 814-437-1246
F: 814-437-1366

Crawford County:
 18282 Technology Dr.
 Suite 101
 Meadville, PA 16335
T: 814-437-1246
F: 814-337-8080



MHY Family Services is Accredited by the Council On Accreditation (COA) signifying that the MHY organization meets standards of quality set forth by the accrediting body.

A Trauma Informed Organization: MHY Family Services supports an organizational structure and treatment framework that involves understanding, recognizing and responding to the effects of trauma. Emphasizing physical, psychological and emotional safety for the entire MHY community, survivors can rebuild a sense of control and empowerment.

Who We Serve: MHY Family Services provides comprehensive treatment, education and on-going trauma informed care for nearly 1,300 youth, families and adults annually, who have experienced trauma and struggle with an array of hardships, including behavioral health concerns, abuse and neglect.



Mars Home for Youth Foundation

Main Campus and Longmore Academy
521 Route 228 • Mars, PA 16046

Mission statement: For 141 years, MHY Family Services has promoted the safety, health, education and spiritual well-being of youth and families.