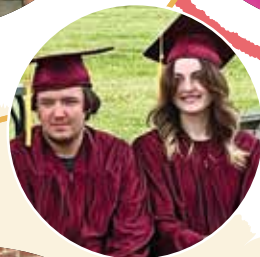
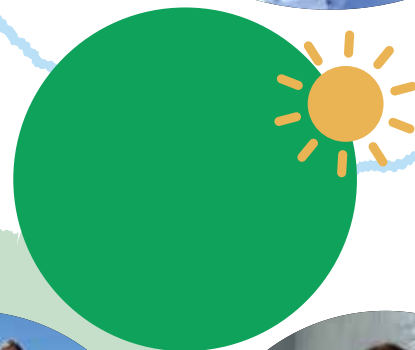


# *Impact* and **Innovation**

Annual Report 2024/2025



## Letter from the **CEO**

As I reflect on the past year, I am filled with gratitude for the unwavering support of our community, staff, and partners. Together, we have strengthened families, empowered children and youth, and provided support and hope across the Commonwealth of PA.



I also want to acknowledge and thank the incredible MHY Family Services Board of Directors, the Mars Home for Youth Foundation Board of Trustees, and the MHY staff for their support during my transition as the new Chief Executive Officer. Their commitment and dedication

to our organization have been empowering. I am inspired as we work together to write the next chapter in our history.

The impact of our programs over the past year would not have been possible without our former Executive Director, Lisa Schiller. Her strong leadership set the organization up for continued success. This year, our programs touched the lives of more than 850 children and families across our region. From trauma-informed education at Longmore Academy to our evidence-based in-home Multisystemic Therapy Program, our mission has remained clear: to strengthen families by responding to the individual mental health and learning needs of children.

As we celebrate our successes, we acknowledge that the challenges facing families are complex and continue to grow. The need for therapeutic learning environments continues to grow and is particularly crucial for the youngest learners entering school for the first time. In response, we are investing in a therapeutic Kindergarten that will be opening for the 2026-2027 school year. This unique classroom setting focuses on individualized learning in a one-of-a-kind classroom space designed in partnership with the Children's Museum of Pittsburgh.

As we look ahead, I am confident that your continued support will not only build upon our successes but also empower us to shape a brighter future for the children and families we serve. Together, we can create lasting change. On behalf of our Board of Directors, Board of Trustees, staff, and the families we serve, thank you for believing in our mission and standing with us. Your partnership is the driving force behind everything we do.

A handwritten signature in blue ink that reads "Samantha Ellwood".

Samantha Ellwood  
*Chief Executive Officer*

## Letter from the **Board President**

On behalf of the Board of Directors, I am honored to extend our profound gratitude for your ongoing support of our mission.

For decades, MHY has been a steadfast beacon of hope and support for young people and families in our community. We are proud to continue this vital work through the academic setting of Longmore Academy as well as the diverse Community Services offerings that reach out to support children and families right where they are. These programs are the heart of our organization, providing essential resources, guidance, and care that truly make a difference in the lives of countless families.

As we look to the future, we also take this moment to acknowledge a significant transition within our leadership. We extend our deepest thanks and heartfelt appreciation to Lisa Schiller, for her years of leadership at MHY. Lisa's dedication, passion, and tireless efforts over her tenure have been instrumental in shaping the impactful organization it is today. Her commitment to our youth and families has left an indelible mark, and we wish her all the very best in her future endeavors.

It is with immense enthusiasm that we look forward to all MHY will accomplish with Samantha Ellwood as our new Chief Executive Officer. Samantha brings a wealth of experience, a deep understanding of youth services, and a visionary approach that aligns perfectly with our goals for growth and enhanced community impact. The Board is confident that her strategic insights and compassionate leadership will guide MHY to new heights, allowing us to serve even more youth and families with excellence and innovation.

Finally, we thank all who have partnered with us to support our mission of helping youth and families. We are excited about the opportunities that lie ahead and the continued positive impact we will make together. Thank you for being an integral part of the MHY family as your support is invaluable as we continue to build a brighter future for the young people in our community.

With sincere gratitude and optimism,



A handwritten signature in black ink that reads "Jim Rankin".

Jim Rankin  
*MHY Board of Directors*



For nearly 150 years, MHY Family Services has been dedicated to supporting the emotional and behavioral health needs of youth and families throughout Western Pennsylvania. What began as a home for orphaned children in the late 1800s has evolved into a comprehensive provider of trauma-informed care and therapeutic services. This evolution is a testament to our adaptability and our commitment to meeting the changing needs of our community.

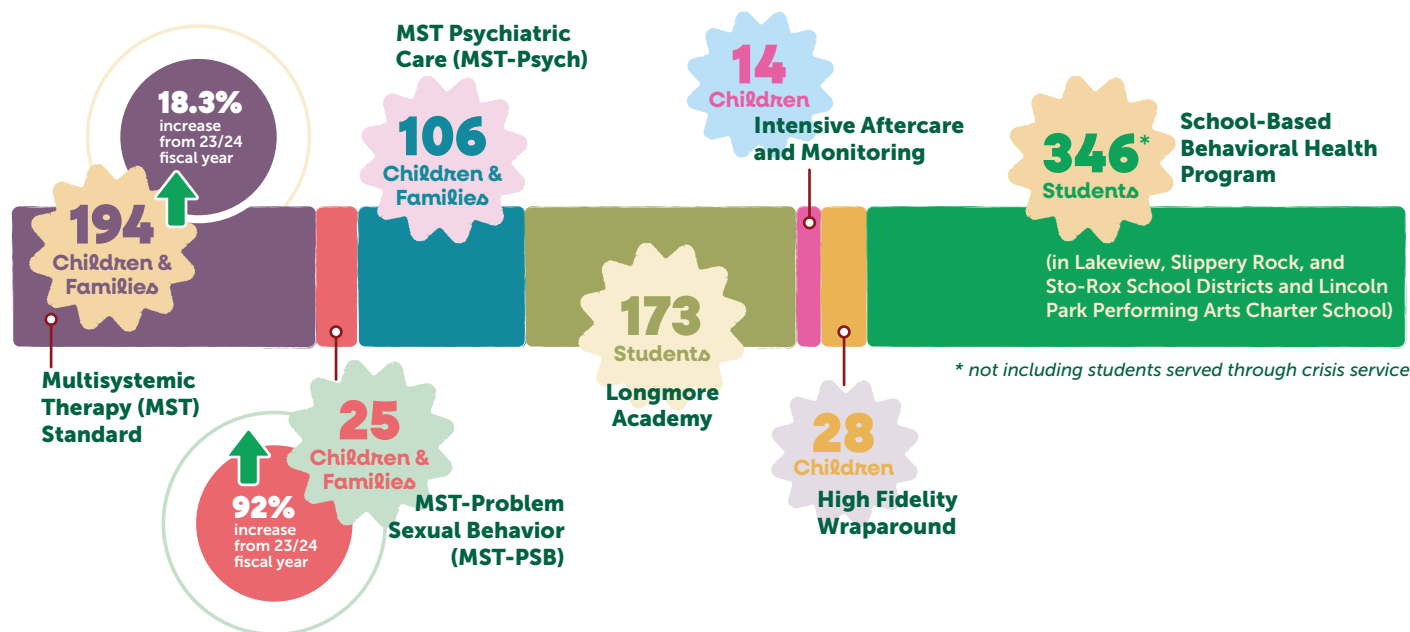


Today, MHY offers innovative programs designed to instill hope, foster healing, and pave the way for lifelong success. These programs, including therapeutic education through Longmore Academy, innovative in-home programs, and community-based services, are all guided by a commitment to creating safe, nurturing environments. This commitment is rooted in optimism, knowing that brighter futures are not just a possibility, but a reality for the children and families we serve.

## MHY Impact

**866** lives moved forward  
this year through MHY's care.

Children and families are building brighter futures with the help of our community services, in-home treatment programs, and Longmore Academy.

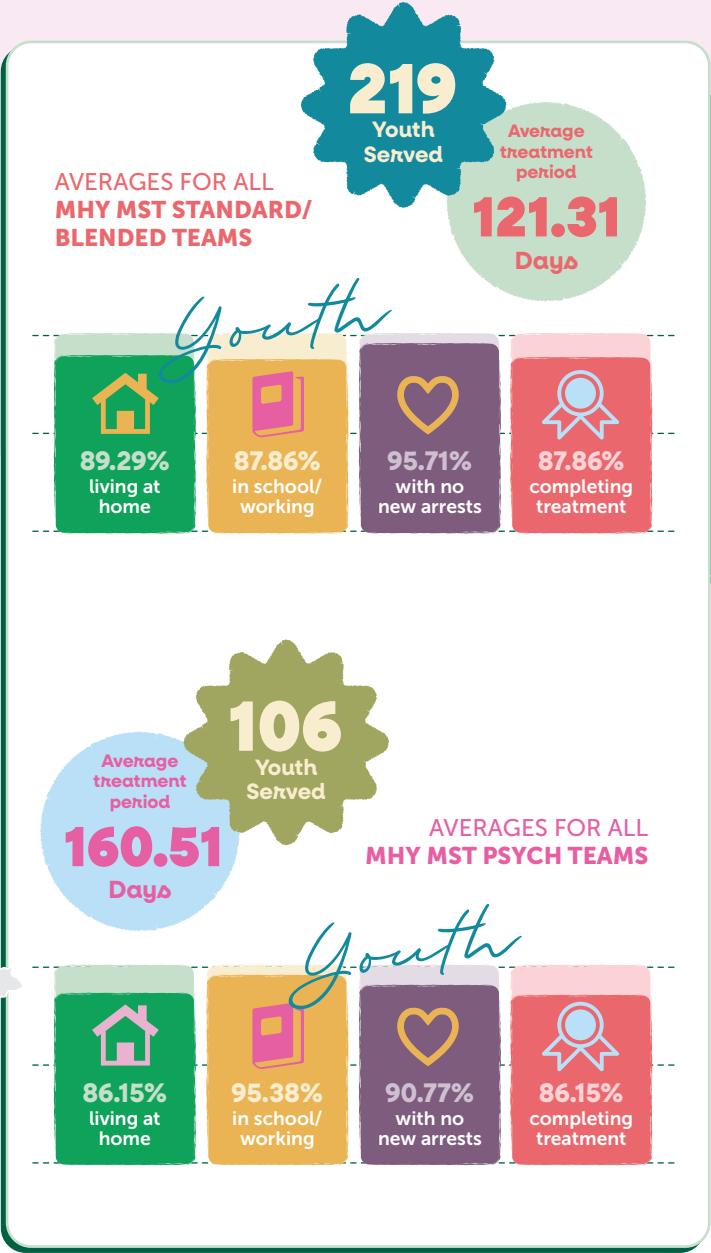
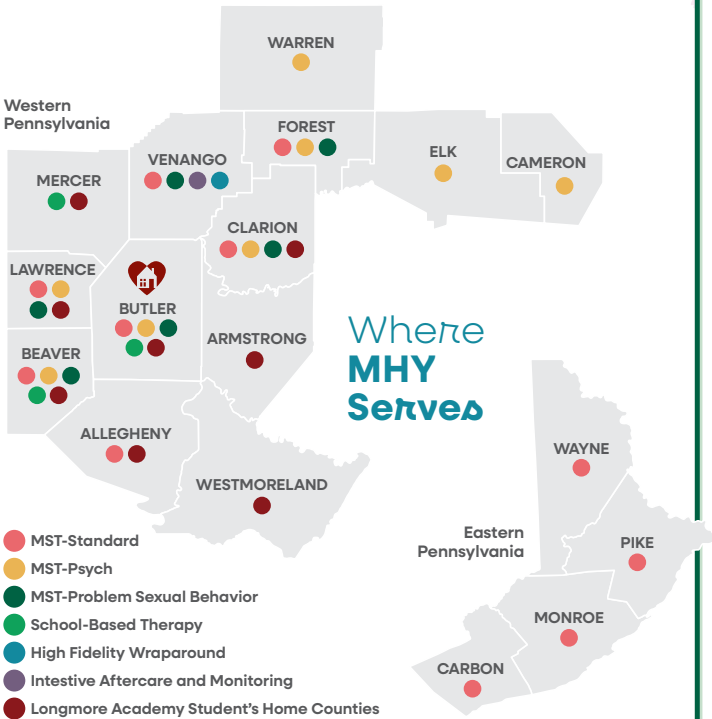


# Community Services



“Working with this family was one of the most impactful experiences for me. They fully embraced MST and the process, and educated me as much as I educated them.”

Summer McQuown,  
MHY Blended Mental Health Therapist



## Journey of Strength and Resilience

At the start of her journey, Millie\* faced more challenges than most teens her age, as she navigated foster care with complex emotional and behavioral health needs.

With the unwavering support of her MST-Psych treatment team and the stability provided by a nurturing foster-turned-adoptive family, Millie found the structure, encouragement, and connection she needed to begin healing and growing.

This year, Millie proudly graduated from high school and received a four-year college scholarship. Passionate about animals, she chose to attend a local community college with a strong veterinary science program, taking meaningful steps toward a future she once thought was out of reach.

Millie’s story is a powerful reflection of resilience, love, and the life-changing impact of compassionate, community-based care. Her transformation is proof that, with the right support, even the most challenging chapters can lead to hopeful new beginnings.



MHY leads the state as the **only provider** offering all three MST adaptations.

## What **Healing** Looks Like

When Gus\* began MST-Psych, he was deeply depressed, withdrawn, and disconnected from his family. Therapy felt like an unpleasant chore, and his relationship with his mom was tense and broken.

Within a few months, Gus began re-engaging with life: laughing, talking with his mom, looking forward to sessions, and rebuilding trust at home. He finished probation, is passing school, and set goals to get a job and earn his driver's license by summer's end.

Gus isn't the only family member benefitting from this work. Gus's mom leaned in, faced challenging moments, and changed alongside him, creating the safety he needed to grow.

To celebrate their hard-won progress, therapists Charlotte and Sherry, together with our clinical psychiatrist, Dr. Song, went the extra mile. They made homemade fishing lures and spent an afternoon with Gus and his mom and brother at a local park, fishing and soaking in the joy of just being together.

**This is what healing looks like.** This is what happens when we meet families where they are — with heart, with consistency, and with the belief that things can get better.



*Courage*

“Back in September, one of my seniors came in wrapped in social anxiety — leaving class, avoiding peers, and shrinking from chances to connect. In our one-on-ones and ‘lunch bunch,’ we built a little toolbox together: regulation skills, language for self-advocacy, and small, brave steps. I watched her open up, make real friends, and start telling staff what she needs. Now she’s graduating with a close circle of friends and the courage to chase psychology in college. I’m going to miss her so much, and I’m incredibly proud. **Moments like this are why our work matters.**”

Kyna Maradei, MHY School-Based Therapist, Lincoln Park Performing Arts Charter School

## Building Community **Partnerships**



After stepping into her role as CEO, Samantha Ellwood connected with local elected officials. The Butler County Commissioners welcomed Samantha to their offices to discuss Longmore Academy and MHY's services in the community.

MHY also welcomed U.S. Representative Mike Kelly for his first visit to MHY's campus. Samantha and Rep. Kelly discussed MHY's work serving children and families across Western Pennsylvania and in four Eastern counties, and explored opportunities for collaboration.

*Samantha Ellwood with the Butler County Commissioners, discussing local needs and MHY services.*



*U.S. Rep. Mike Kelly on his first visit to MHY's campus, meeting with MHY leadership to learn about our expanding footprint and impact.*

# Longmore Academy

Our mission is to motivate students to become caring, contributing members of society and reach their untapped potential.

Summer Camp

## Growth that Matters

1 in 2

elementary students advanced at least **one full grade level** in math or ELA.

3 in 10

advanced two full grade levels.

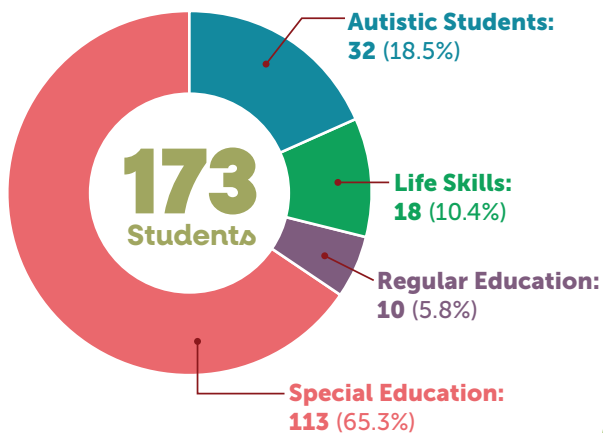


## Individualized Support

19

Students

benefited from **one-on-one paraprofessional assistance** to ensure safety, regulation, and access to learning.

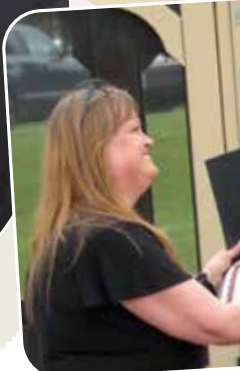


“



The programs my child has participated in through MHY Family Services kept him alive, safe in school and able to graduate with a high school diploma.

MHY Parent







**37**  
School  
Districts

**8**  
Counties

**173**  
Students

Longmore Academy is proud to serve students from across the Pittsburgh region.

MHY has **transformed every former residential building** on our campus into vibrant classroom spaces — a powerful reimagining of our history to meet today's educational needs.

**“My most valuable part of my experience at Longmore has been the support from the staff.”**

*Longmore Academy graduate*

“The 2025 graduates of Longmore Academy are nothing short of remarkable. Each one has faced tough personal challenges ranging from ongoing mental health struggles to physical disabilities and the demands of working full-time. Yet, they showed up, persevered, and earned their diplomas with grit and determination. They learned not only academics but also resilience, self-awareness, and the power of community. As they move forward, we hope they carry with them the deep strength they've discovered, the confidence that they can overcome challenges, and the understanding that their past does not define their future — it fuels it.

*Joy Pfaff, School Counselor, Longmore Academy*



# Building Brighter Beginnings:

## Therapeutic Kindergarten

MHY is launching a Therapeutic Kindergarten for young learners with social, emotional, and behavioral challenges — offering a safe, creative space to build confidence, resilience, and tools for lifelong success.

### Program Highlights:

#### Safe & Nurturing Classrooms

Calming, flexible spaces with sensory zones, interactive stations, and quiet areas tailored to each child's needs.

#### Specialized Educator Training

Teachers equipped with advanced therapeutic strategies to foster social-emotional growth.

#### Essential Learning Tools

Resources such as sensory supports and social stories to help children regulate emotions, build relationships, and thrive.

### Bringing a Vision to Life

To bring this vision to life, MHY is partnering with the **Children's Museum of Pittsburgh** to design custom classrooms that spark creativity and joy. These spaces will nurture both physical and cognitive development — serving as a true foundation for hope and growth. With community support, we are shaping a place where children discover their strengths and begin their educational journey with confidence.

Opening  
for the 26-27  
school  
year!



Support from the **A.J. Sigismunda Palumbo Charitable Trust**, the **Robert and Judith Ferree Foundation**, and the **Northwest Charitable Foundation, Inc.** have helped us plan and prepare our upcoming kindergarten program. Their support is helping us design an inclusive, imaginative space where children can learn, grow, and thrive. Thanks to their generosity, we are one step closer to providing an enriching environment for our youngest learners.

children's  
museum  
pittsburgh





# Celebrating Service



Partner  
Spotlight

## EY Volunteers

**EY's Day of Service** delivered fresh color, great teamwork, and a real morale boost to our admin offices. Thank you for the transformation and your continued partnership.

## Service in Action

Volunteer  
Spotlight

## Ginger Store Champions

MHY's Ginger Store gives kids and teens a dignified way to choose the clothing they need. We are especially grateful to **Cindy, Carol, and Sherri** for the care and commitment they bring each week, helping every shopper feel comfort, confidence, and dignity.



Partner  
Spotlight

## Senior Connection from Saint Luke the Evangelist Parish

Thank you to the **Senior Connection** crew for spending a beautiful fall Saturday repainting our PNC Learning Pavilion! We were glad to welcome familiar faces and meet new ones as they refreshed this well-loved outdoor learning space for Longmore students.

## Parkwood Church VBS Students

**Parkwood Vacation Bible School Plus** students showed up in a big way — cleaning, organizing, and helping prepare MHY for the new school year. We're so grateful for their energy and care!

“

Parkwood Church is passionate about the mission of MHY! For a number of years, youth from our Vacation Bible School Plus have volunteered a day to help where it was needed. As their pastor and a member of the MHY board, I understand the deep importance of what MHY does and how meaningful involvement of the community is in making MHY such an integral part of helping at-risk youth and families. **What a joy it is to join in this mission!**

*Reverend Jeff Potter, MHY Board Member*



Partner  
Spotlight

## Westinghouse

For over 10 years, the team at **Westinghouse Warrendale** has assembled and donated bikes to MHY, bringing smiles, confidence, and independence to our kids. Thank you for your continued partnership!

## Committed to Partnership

Just in time for the 25–26 school year, Longmore Academy's basketball hoops and backboards were refurbished through a generous \$10,000 gift from the **Rich-Mar Rotary Club**. As a longtime partner, the Rotary's support continues to strengthen student life — enhancing safety, play, and the movement breaks our students rely on each day. **Their generosity reflects a true commitment to strengthening both MHY and our community.**



Nick Panza,  
Longmore teacher  
with Dave Hein  
Past President and  
members of Rich-  
Mar Rotary Club

“

MHY embodies many of Rotary's areas of focus, including basic education and literacy, maternal and child health, and community development. We're committed to continuing this partnership, and we're happy to improve the gymnasium used by Longmore students.

Dave Hein, 2024–25 President, Rich-Mar Rotary Club

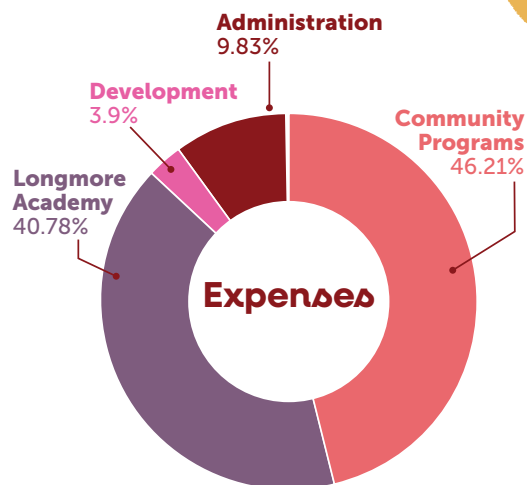
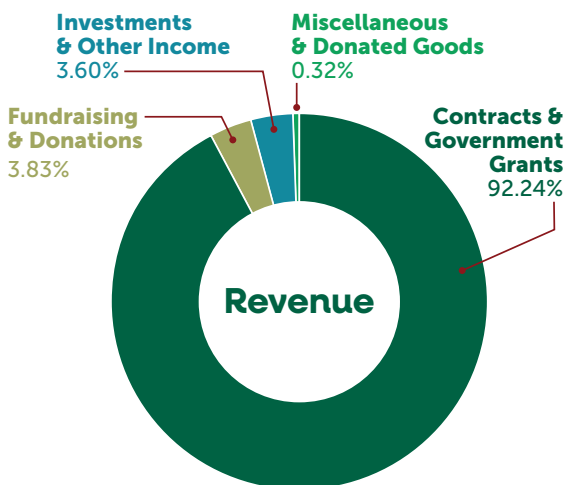
MHY team  
members installing  
new equipment.



Play

## Financial Snapshot

Pre Audit 2024-2025



328  
In-Kind  
Donations

655  
Monetary  
Gifts

460+  
Volunteer  
Hours

# Donor Report

Thanks to the generosity of donors like you, MHY Family Services is helping youth and families grow and heal together. Your support is transforming lives, each and every day.

July 1, 2024 - June 30, 2025

♥ denotes an MHY employee or board member

## Inspiration Donors

A.J. and Sigismunda Palumbo Charitable Trust  
John & Carrie Austin  
Thomas & Suzanne Bragg  
Estate of Martha Lockhart Mason  
Anonymous  
The Pittsburgh Foundation  
Linda R. St. Clair  
Staunton Farm Foundation  
**Ronald & Cindy Thomas** ♥

## Sanctuary Donors

Laurie Adams  
John Coles  
Judith L. Danielson  
Dutilh United Methodist Church  
Edward & Gayle Ferree  
Robert & Judith Ferree Foundation  
Holy Trinity Greek Orthodox Church  
Alice E. Mott  
Northwest Charitable Foundation, Inc.  
Passavant Hospital Foundation  
Rich-Mar Rotary Club

## Grow & Strengthen

Support from **Passavant Hospital Foundation** has helped us grow and strengthen our MST Programs in Allegheny, Beaver, and Butler counties. Their partnership ensures youth can stay safely at home, succeed in school, and build stronger family relationships.

## Hope Donors

Cynthia Bracken  
#1 Cochran Chevrolet  
Prescott and Katherine Musler  
Jeffrey & Vicki Rothermel  
**John & Jill Smelko** ♥  
Mars Area Soccer Club  
Estate of R.A. Wilkinson  
Alvin & Mary Zamba

## Healing Donors

Armstrong Group of Companies  
Robert & Catherine Cornell  
Dave's Country Meats  
W. Moreland & Ruth U. Ernst Charitable Trust  
Cyril & Jane Fox  
First Presbyterian Church - Murrysville  
Kay Frederick  
Jeremy & Carol Hill  
Stephen & Kathy Horvath  
Robert & Gail Hunter Foundation  
Janney, Montgomery, Scott LLC  
Kenneth & Barbara Judson  
Anonymous  
Mars United Presbyterian Church  
John & Elaine Morrow  
PennEnergy Resources, LLC  
**Jeffrey & Jen Potter** ♥  
Presbyterian Women of Third Presbyterian Church  
Helen Reed Trust  
**Richard & Ellen Reynolds** ♥  
Saxonburg Memorial Presbyterian Church  
**Gregory & Lisa Schiller** ♥  
David & Victoria Turner  
John & Jean Utz Charitable Foundation  
Joseph & Erin Williams



## Commitment Donors

Anonymous  
**Debra Arner** ♥  
William Been & Tina Wilson-Been  
Rachel Bekelja  
Henry & Anne Bernacki  
John & Lori Brohm  
Kenneth & Catherine Bronder  
Skip Cady III  
Thomas F. Carmen M.D.  
Fred & Lisa Clerici  
Edison & Dolores Click  
Charlie Curti  
**Robert Dassel & Katharine Robinson-Dassel** ♥  
Edward & Diane Elinski  
John R. Ellis  
Erie Insurance  
Roberto & Kelly Farfan  
Jennifer Giesler  
Mary Louise Green  
Mike Grell  
John & Carol Hagan  
Anonymous  
Annette S. Hillman  
Hunter Truck Sales  
Allen G. Kline  
**Leslie Lancaster** ♥  
Magee Plastics  
Robert Mainwaring  
Daniel McCauley  
**Tim & Leslie Miller** ♥  
Alex Motevosian  
Kenneth & Joanna Nilsen  
Nothing Bundt Cakes  
Parkwood United Presbyterian Church  
Plains Presbyterian Church  
Presbyterian Church USA Foundation  
Christopher & Carrie Rimolt  
Jim & Sue Ritchey  
Glenn & Kathleen Ritz  
Robert & Gayle Santillo  
David & Nancy Santory  
Gary & Patricia Sauer  
**Walter & Pamela Schiller** ♥  
James & Barbara Sekel  
Mark & Stacy Siegal  
Robert Sigmund  
Cecelia Smelko  
Steel Town Corvette Club  
Mark & Tammy Steele  
Ronald & Mary Tambellini  
Valencia Presbyterian Church  
Ray Walkowiak  
**Peter & Peg Watt-Morse** ♥

## Make an Ongoing Impact

Set up a recurring gift online to provide steady support for MHY kids and families year-round.

## Friendship Donors

Donna Blackmon & Timothy McGuire  
**Lukas Carothers** ♥  
Eric Chapman  
Crestview United Presbyterian Church  
Stephen & Rachel Cupcheck  
GetGo  
Holy Trinity Greek Orthodox Church – Ladies Philoptochos Omonia  
H.P. Starr Lumber Co., LLC  
Anonymous  
Steven & Nancy Kish  
Mark & Carol Kopar  
Julie Legal  
Paul & Susan Lieber  
Dan & Maureen Marsteller  
James & Colleen Miller  
Eugene & Kelley Morrone  
Mt. Nebo Presbyterian Church  
North Pittsburgh Corvette Club, Inc.  
Joseph & Sandra Oliver  
**James & Meagan Rankin** ♥  
**Christine Raymond** ♥  
Jim & Janie Reynolds  
Norman & Mary Rish  
Riverview Intermediate Unit (Remake Learning Days)  
Janice Schmitt  
Kenneth & Karen Shane  
Kathryn Smulsky  
Jonathan & Lynnette Snyder  
Dina Spagnolo  
Rachel Tumminello  
UnitedHealth Group  
Gary & Linda Woodward



## Support Donors

### Deb Alexander ♥

Heather Lee Amos-Yeo  
AT&T Company Match  
Robert & Connie Baker  
James Barrie  
Kurt & Joleen Barshick  
Anonymous  
Ronald & Janet Bennett  
Alice Berkey  
John Bissell  
Melissa Ann Bitzer

### Roger & Jessica Black ♥

Black Tech, Inc.

Mark Bonsmann

Brian & Julie Brand

Anonymous

### Doug & Kimberly Brannock ♥

Buffalo Presbyterian Church

Sally Bunnell

Janine B. Callen

Calvin United Presbyterian

Church-Women's Association

### Matt & Valerie Cannon ♥

### Craig & Jill Ceasar ♥

Anonymous

Frank & Laura Chappel

Kerry & Becky Check

Kelly Cheponis

Kiranmai Cherlakola

Johnna Chicots

Lori Cipkins

Ron Coddington

Crete Presbyterian Church - Clara

Henderson Missionary Society

Mary Curry

Steven & Amanda Custer

Kathy Dancho

Sharon Dennard

Carol Dino

Beverly Diurba

James S. Doyle

Joann Eckard

### Samantha Ellwood ♥

William & Mary Lou English

Erie Insurance Company

Sylvia Eve

Anthony & MaryAnn Fasciani

Connie Federbusch

Martin Feuer

William & Ann Fichter

William & Melanie Fish

Nicholas Fisher

William Fisher

Anonymous

Jane Frankel

Frances & Richard Fuhrer

LeeAnn Fulena Esq.

James & Joyce Gascoine

Kate Gascoine

Joseph & April Gatial

Lee & Judie Geortz

Yvonne Geruschat

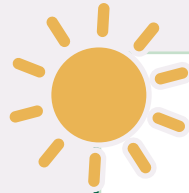
Leonard & Doreen Grada

### Erica Haas ♥

Marsha Haley

Robert & Karen Hallisey

Loretta Hanley



## Faithful Giving

Through many years of faithful giving,  
**Dutilh United Methodist Church**  
has made it possible for MHY kids to  
experience Camp Allegheny, Jumonville,  
and Wesley Woods.



### Michael & Karen Harvey ♥

Dee Hedly

The Helping Hand Personal

Placement Agency, LLC

Anonymous

Karl & Penny Hoak

Thomas & Rosella Hoffmann

Philip & Kimberly Hollern

Timothy D. Holt

Anonymous

Nicholas & Carrie Jablunovsky

Clifford & Nora Johnson

Nikki Jones

Ronald & Elizabeth Kandt

Patrick & Michelle Kane

Hemanth & Laurie Kapoor

Amy Keller

Keystone Lending Alliance, LLC

Marsha King

Patricia & Harvey Klein

Karen Kocjancic

James Kokoros

James & Irene Kopp

Jacqueline Kovach

Robert & Bonnie Kriberney

Kim Krisciunas

Krol Media Associates LLC

Kuczynski Family

John H. Lambert

Anonymous

Pamela Landis

Denise Layne

Amy Lazzo

Kathleen Lennen

Ellen Leslie

Scott Livingston

Katie Lo Coco

Lope Casker

Robert & Michelle Lorence

Make My Donation, Inc.

Harry & Judith Makinak

Jim Manning

Angelia Matrogran

Donna Maybach

### Al & Linda Mazuch ♥

Paige McCoy

Lynn McMahon

Annamary McMullen

Anonymous

David & Judy McNally

Dennis & Sari McNamara

Metro Fence Company, Inc.

Megan Montgomery

Brent & Christine Moon

Mt. Nebo United Presbyterian

Church - WWC

Darlene Nagel

Nativity Lutheran Church

Leo Nedza

Anonymous

Bart & Patricia Niemeyer

Dave & Mary Jo Nock

David Oreski

Paul & Paula Palmer

John Palavnos

Chris & Michelle Papik

Michael & Marcie Papik

Timothy & Barbara Patterson

John & Rita Mae Petricko

Pfeifer Hardware & Supply

Jacqueline Poloka

### Kimberly Powell ♥

Jeanne Presco

John & Angela Price

Christopher & Kristina Puma

N. & Meera Ramakrishna

Wallace & Karen Rapp

Walter & Lori Rausch

Matthew Reed

Rehoboth Deacons

Gail Riska

Brent & Jeannette Robinson

Jason & Christina Rupp

Claudia Ruzanic

Rosalyn Ruzanic

Henry & Susan Ryals

Erin Samlock

Richard & Susan Schinagl

Charles Schramm

Lynn Seles

Frank & Marcia Semper

Jamie Shebek

Donald & Virginia Shirey

Gina Shirey

Connie Simpson

Brian & Lauren Smith

Martha Smith

Sylena Smith

Doris Sopher

Amy Spehar

St. Paul's United Methodist

Church Women

St. Thomas Anglican Church

Judith E. Steenson

Sterling Property, LLC

Craig & Heather Stevens

Arthur & Sue Ann Stewart

David & Diane Suski

Lev & Rae Ann Swalley

Donald & Amy Tacik

Eloise Tacik

Mary Taylor

### Wendy Teamann ♥

Jacqueline Tirpak

Gregory & Karen Marie Tobias

Darla Trbusich

Ruth Ann Tully

Thomas & Marci Turner

United Way of Allegheny County

Edward & Margaret Vogel

Anita Wagner

Richard & Mary Ward

Syble Wasilowski

Anonymous

Molly Wawrzynski

Christian & Susan Werner

White Oak Springs Presbyterian

Church

Marie J. Wilson

### Adam Woodfill &

### Dawn McHugh-Woodfill ♥

Women's Club of Mars

Charles Wynn

Frank & Mary Zervos

Bill & Teresa Zitelli

John & Susan Zurisko



## Nourishing Students & Supporting Families

### Old Union Presbyterian Church and Saint Luke the Evangelist

Parish generously  
provide snacks and  
meals for our students  
to take home. Their  
support helps fight food  
insecurity and ensures  
needs are met both  
in the classroom and  
beyond.

## In-Kind Donors

Allegheny Presbyterian Church  
Jeffrey & Kimberly Astbury  
Samantha Baker  
Lucy Balazs  
Alysia Barrett  
Kurt & Joleen Barshick  
Patti Bartmas  
Big Joe's Towing  
Judy Bippus  
**Roger & Jessica Black** ♥  
Blessed Francis Seelos Academy  
The Bonno Family  
Mark Bonsmann  
Amy Borrelli  
Brian & Cheryl Boyle  
Mitchell Bricker  
Julie Brisch  
Jeri Brubach  
Bob & Ruth Burig  
**Valerie and Matt Cannon** ♥  
Chloe Ceasar  
**Craig & Jill Ceasar** ♥  
Justin Ceasar  
Jamie Chamblin  
Eric Chapman  
Hudson Choffel  
Kruti Chokhani  
Katie Christo  
Lisa Corbin  
Cranberry Community United  
Presbyterian Church  
Cross Roads Presbyterian  
Church of Gibsonia  
Madison Cunningham  
Charlie Curti  
Kathleen Dancho & Nancy Nahi  
Dave's Country Meats  
Haley Davinsizer  
Days For Girls  
Ella DePaoli  
Anonymous  
Dillon McCandless King Coulter  
& Graham LLP  
Carol Dino  
Becky Dittman  
Courtney Dollhopf  
Jane Dollhopf  
Jim Dollhopf  
Jamie Doner  
Stephanie Drenning  
Malia Duffy  
Dutilh United Methodist Church  
Mike and Terry Dziewisz  
Riley Edwards  
Angel Facemire  
Kelly Farfan  
FedEx Ground (North Pittsburgh)  
Judy Ferragonio  
Andrew & Anna Fournandis  
Kay Frederick  
Debbie Furey  
James & Joyce Gascoine  
George & Anna Halkias  
Alex & Ann Hein  
Dave & Lynn Hein  
GetGo #3305  
Shelly Gigliotti

## Accessible Care



Funding from **Staunton Farm Foundation** has allowed us to continue to expand our care and start a MST-Psych program in Lawrence County. Thanks to their generosity, we can create more accessible care that ensures families have the resources and support they need close to home.

Victoria Gissendaner  
Mike & Jo Goddard  
Leah Anise Golebiewski  
Gail Gongaware  
Chris Grove  
H.P. Starr Lumber Co., LLC  
**Erica Haas** ♥  
Alaina Hahn  
Amy Hahn  
George Halkias  
Gabriella Harding  
Roz Hare  
Kyra Harvey  
Kristen Hawn  
Chuck Heshler  
Polly Hicks  
Michael Hnath  
Taylor Hollern  
Holsinger P.C.  
Holy Trinity Greek Orthodox  
Church  
Hope Lutheran Church  
Kaitlyn Horrell  
Ryan & Carole Householder  
Hunter Truck Sales  
Insight  
**Bobby Jakicic** ♥  
Amy James  
Cal Johnson  
Mary Kay Johnson  
Karen Jones  
Nikki Jones  
Beth Karos  
Paul & Tina Kaufman  
Jim & Ruth Kiefer  
Lisa Koch  
Reanna Kolarcik-Schmitt  
Lisa Kovach  
Lydia Kovach  
Madisyn Kovach  
John & Mary Rae Kowach  
Don & Michele Krafjack  
Doug & Melissa Krahne  
Bruce & Denise Kremmel  
Denise Kristofic  
Phillip Lachance  
Abigail Zorrilla Latona  
Denis & Linda Lawlor  
Nicolette Lefakis  
Kathleen Lennen

Tracey Lessner  
LifePointe Alliance Church  
Jessica Lindenberg  
Pam Lindenberg  
Rebecca Lindenberg  
Paul & Margaret Lombardi  
Riley Long  
Christina Lopez  
Dorothy Lowers  
George & Carla Lowers  
Michael Manfresca  
Jim Manning  
Nikki Marsh  
Frances & Eleanor McCauley  
Kristine McCoy  
Diane McDonald  
Bonnie McElhiny  
Kraig & Sherri McEwen  
Anna McGrath  
Theresa McGrath  
Pat & Anna McGuire  
Margie McMahon  
Jamie McMurtrie  
Kathleen McPherson  
Beth Meahl  
Leslie Meredith  
Connie Mikus  
James & Colleen Miller  
Mitsubishi Electric Power  
Products, Inc.  
Chris Morris  
Aiden Mowrey  
Matt Mueller  
Prescott & Katherine Musler  
Phillip & Rosa LaChance  
Nativity Lutheran Church  
Mary Nesbitt  
Derek Nieman  
Dave & Mary Jo Nock  
Nothing Bundt Cakes  
Elizabeth Noysser  
Andrew O'Connor  
Melissa Ola  
Old Union Presbyterian Church  
Katie Olsen  
Matthew Olsen  
Michael & Marcie Papik  
Lori Patten  
Marsha Pauli  
Tyler Pearsall  
Perry Highway Lutheran Church  
Darleen Peters  
Madelyn Peterson  
Edward & Stacey Pfeifer  
Gabe Pfeiffer  
Pine-Richland Kindness Group  
Plains Presbyterian Church  
Reese Polito

Miranda Porretta  
**Jeffrey and Jen Potter** ♥  
James & Debra Price  
Carly Radomski  
Amy Raducz  
Keira Raishart  
Anthony & Tracy Recchia  
Gary & Deb Reck  
Allyson Reilly  
Resilient Roots Counseling  
Becky Rinker  
Ella Roach  
Shawn & Teresa Ross  
Elizabeth Rossi-Mentecki  
Saint Mark the Evangelist Parish  
Saint Mark the Evangelist Parish —  
Saint Kilian Church  
Saint Peter's Reformed Church  
David & Nancy Santory  
Alexander Sargo  
Anthony Sargo  
Sara Schlegel  
Rachel Schmiedlin  
Sharon Schmitz  
Brady Schneider  
Eric Schweiger  
William & Laura Schweiger  
Angela Seebacher  
Serving Our Sentinels  
Arisa Shaner  
Sichler Family  
Izzy Somerville  
Martin & Barbara Spithaler  
St. Richards Ladies of Charity  
Shannon Sticinski  
Courtney Stragand  
David & Annie Studt  
Stuvach Printing & Graphics  
Ed & Nicole Swierczyk  
Nate Swisher  
Gary Szafranski  
Lee Takach  
James & Linda Taylor  
Tickets for Kids  
Tye Family  
Arber Ukmata  
UPMC Passavant - Cardiac Stress Lab  
Suzanne Veltri  
Debbie Vogel  
Constance Walters  
Renee Waselko  
Anonymous  
Shelly and John Watson  
Makenna Weaver  
Emily Weingartner  
Sarah Weis  
Kaitlyn Wilczynski  
**Toni Wimer** ♥  
Lori Wisniewski  
Darlene Witt  
Tom & Patty Woitas  
**Woodmen Life Insurance —**  
**Mark & Tiffany Greiner** ♥  
Irma Woodson  
Kathy Yarnick  
Ryan Zeleznik  
Bill & Teresa Zitelli

## How to Support MHY

A legacy gift to MHY in your estate plan will ensure care will be available for children and families.



## Curiosity & Connection

Through our partnership with **Tickets for Kids**, students, children, and families in our care have experienced big-league games, inspiring cultural events, and world-class museums across Pittsburgh. These opportunities create lasting moments of joy, curiosity, and connection.



### In Honor Of ...

**Jill Ceasar**  
from Claudia Ruzanic

**Jaxon Cunningham**  
from Richard Schinagl

**MaryAnn Fasciani**  
from Bill & Ann Fichter

**Grandchildren — Chris, Justin, and Alexa**  
from Rita Mae Petricko

**Karen Harvey**  
from Lev & Rae Ann Swalley

**Caroline Montgomery**  
from Megan Montgomery & Bryan Munoz  
Lisa Schiller

**Bob & Peggy Morris**  
from Christian and Susan Werner

**Kathi Robinson-Dassel**  
from Lisa Schiller

**Lisa Schiller**  
from MHY Board of Directors  
MHY Board of Trustees  
Carol Dino

**Pam Schiller**  
from Jill Smelko

**Virginia Shirey**  
from Gina Shirey & Mateo Britez

**The Smelko Family**  
from Lee Ann Fulena

**Cindy Thomas**  
from Lisa Schiller

**Felipe Valdez**  
from Alice Berkey

**Rich Wood**  
from Lisa Schiller

### In Memory Of ...

**All the former students and staff**  
from James Kokoros

**Robert "Bob" and Martha "Skip" Amos**  
from Heather Lee Amos-Yeo

**Bunnie Bonsmann**  
from Mark Bonsmann

**Kim Brannock**  
from Friends at MHY Family Services  
Karen Kocjamcic  
Kim Krisciunas  
Angelia Matrogran  
Erin Samlock  
Lisa Schiller  
Jill DeStefano Smelko  
Kathryn Smulsky  
Jacqueline Tirpak

**Steve Carpenter**  
from Jill & Craig Ceasar

**Grace N. Click**  
from Katie LoCoco

**Paul Domen**  
from M. Kay Frederick

**Lynne Feuer**  
from Martin Feuer

**Cyril Fox**  
from Friends at MHY Family Services  
Lisa Schiller  
Martha Smith

**Alan S. Frankel**  
from Jane Frankel

**George Henderson**  
from Dave & Vicki Turner

**Joseph Everett Knappenberger**  
from Marie Wilson

**Michael Lazzo**  
from Amy Lazzo

**Joel Lennen**  
from Kate Lennen

**Joe & Lena Macchiarolo**  
from Craig & Jill Ceasar

## How to Support MHY

All gifts made in honor of or remembrance of a loved one will directly impact children and families in our community.

**Walter & Betty Mainwaring**  
Bob Mainwaring

**John Mason**  
Dave & Carol Arbuckle

**Betty McGaughey**  
Annamary McMullen

**Jan Mellor**  
from Jim and Barb Sekel

**Rodney & Joan Morley**  
from Lisa Schiller

**Steven Mumford**  
from Marsha Haley  
Kent Parkhill  
Dave & Vicki Turner

**John Pishko Jr.**  
from Jill Ceasar

**Marhea Ruzanic**  
from The Ceasar Family  
Rosalyn Ruzanic

**Warren "Lee" Ruzanic**  
from Rosalyn Ruzanic

**Edwin Shields**  
from Angela Price

**H. Dale Sopher**  
from Doris Sopher

**Marty Swalley**  
from Mike & Karen Harvey

**Norman & Peggy Tisdale, Jr.**  
from The Fisher Family

**Ronald Wagner**  
from Anita Wagner

**James Finley Wilson**  
from Marie Wilson

Every effort has been made to accurately reflect the gifts received between July 1, 2024, and June 30, 2025. Please contact Karen Harvey, Director of Development, at 724.625.3141 x283 to address inadvertent omissions or errors.

MHY Family Services is a 501(c)3 nonprofit organization. A copy of the official registration and financial information may be obtained by calling 800.732.0999. Registration does not imply endorsement.





## Our Mission

Guided by our values,  
MHY Family Services  
strengthens families by  
responding to the individual  
mental health and learning  
needs of children.



## Community Support Centers

### Main Campus & Longmore Academy

521 Route 228  
Mars, PA 16046  
(MC) T: 724-625-3141 • F: 724-625-2226  
(LA) T: 724-625-1140 • F: 724-625-7976  
info@mhyfamilyservices.org

### Allegheny County

820 Evergreen Avenue  
Pittsburgh, PA 15209  
T: 412-408-3693 • F: 412-408-3692

### Beaver and Butler County

On the MHY main campus  
521 Route 228  
Mars, PA 16046  
T: 724-625-3141 • F: 724-625-2226

### Clarion, Forest, Warren, Elk, and Cameron Counties

214 South 7th Avenue, Suite 21  
Clarion, PA 16214  
T: 724-625-3141 • F: 724-625-2226

### Venango, Clarion and Forest Counties

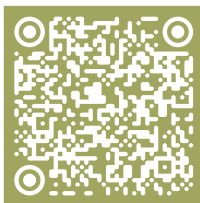
1243 Liberty Street  
Franklin, PA 16323  
T: 724-625-3141 • F: 724-625-2226

### Carbon, Monroe, Pike And Wayne Counties

580 Main Street, Unit B3  
Stroudsburg, PA 18360  
T: 724-625-3141 • F: 724-625-2226

Explore our website to learn  
more about our programs,  
impact, and ways to get involved!

[mhyfamilyservices.org](http://mhyfamilyservices.org)



## Board of Directors

James Rankin, *President*  
Rev. Jeffrey Potter, *Vice President*  
Tim Miller, *Treasurer*  
Patrick Abramowich, *Member*  
Deb Alexander, *Member*  
Debra Arner, *Member*  
Patricia Elliott-Rentler, *Member*  
Leslie Lancaster, *Member*  
Katharine Robinson-Dassel, *Member*  
James Segedy, *Member*  
Jill Smelko, *Member*  
Wendy Teamann, *Member*  
Peter Watt-Morse, *Member*

## Board of Trustees

Valerie Cannon, *President*  
Jill Smelko, *Vice President*  
Kimberly Powell, *Treasurer*  
Kimberly Brannock  
(In Memoriam – served until April 2025)  
Tim Miller, *Member*  
Lisa Pritchard, *Member*  
Richard Reynolds, *Member*

## Leadership

Samantha Ellwood  
*Chief Executive Officer*  
Lukas Carothers  
*Chief Clinical Officer*  
Karen Harvey  
*Director, Development*  
Sallie Holmes  
*Chief Financial Officer*  
Christine Raymond  
*Principal, Longmore Academy*

